

Chicago Scene

The Official Publication of
The Porsche Club of America,
Chicago Region

June 2000



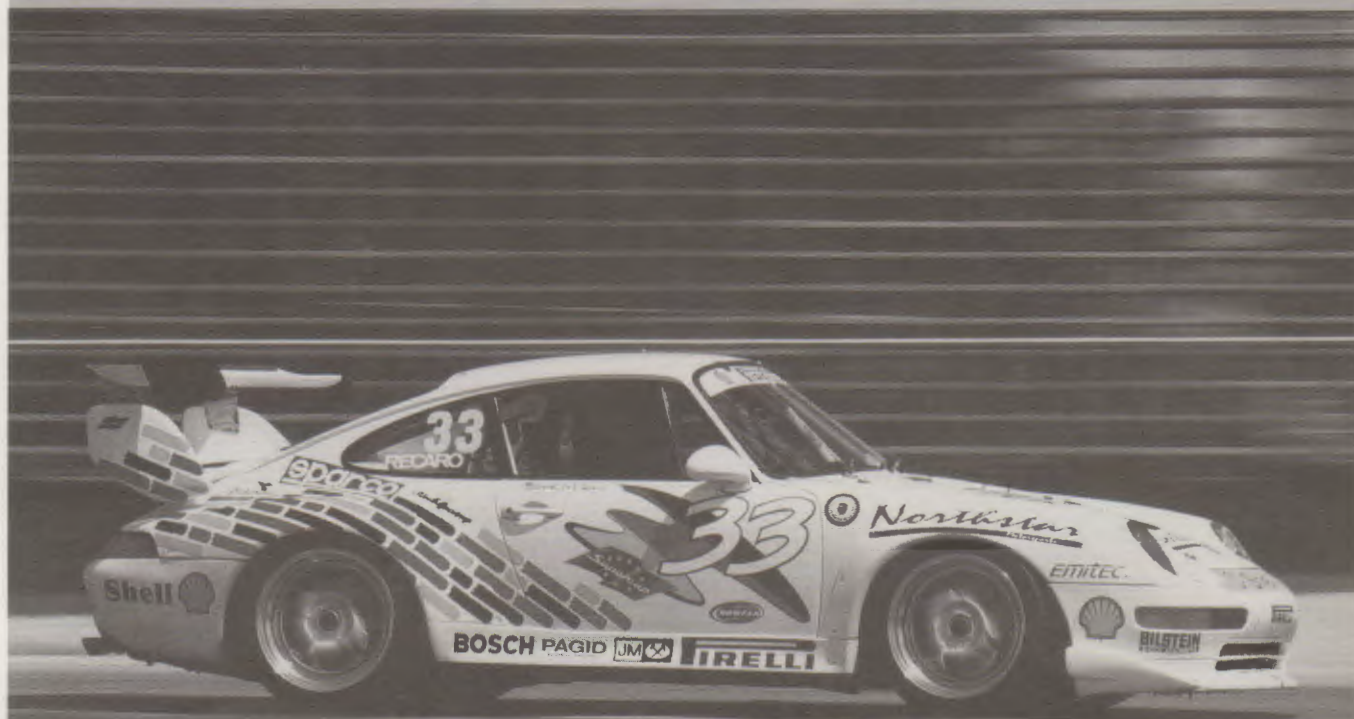
SPARCO ■ BELL ■ STAND 21 ■ ARAI ■ MOMO ■ PAGID ■ SHOEI ■ DIADORA ■ SCHROTH

PERFORMANCE FRICTION ■ ACCU-GAGE ■ STONGARD ■ CORBEAU ■ AMEREX ■ FIRE BOTTLE ■ ROBIC ■ I/O PORT

OMP ■ SABELT ■ RECARO ■ ATE ■ MOTUL ■ BREY-KRAUSE ■ REDLINE ■ ROYAL PURPLE ■ CORBEAU ■ HOT LAP

150 MPH...

Not the time to think about your Safety Equipment



Call us, we can help! To Order: 800-356-2080

Northstar
Motorsports

Safety Equipment & Accessories

Visit our website to shop online at www.northstarmotorsports.com

28144 West Industrial Avenue, Suite 108, Barrington, IL 60010 Monday-Friday 9-5 Saturday 9-1

TIF ■ RAYTEK ■ SWEPKO ■ WURTH ■ K&N ■ MAHLE ■ CAMELBAK ■ BIEFFE ■ NADY

Chicago Scene

The Official Publication of the Porsche Club of America—Chicago Region

Inside this Issue

Upcoming Events

Calendar of Events	2	Rallye II—June 4	15
Behind the Scene	3	Gingerman—June 10 & 11	24
Top Ten	10	Concours II—June 18	25
Welcome New Members	14	Blackhawk—June 21/July 12	18
Tech Sheet	20	Autocross II—June 25	21
The Mart	31	Golf & Dinner -July 15	
Rallye I Results	30,42	Autocross III-July 16	
Concours I Results	43	Concours III/Potters Picnic- Aug. 6	
Board and Coordinators	44	Road America II—Sept. 1-4	26-29

Advertisers Index:		Dnh Construction	3	J.D. Heckman	34	Pegasus	31
Company, page #		Ed Napleton Porsche	IBC	Kelly Moss	16	Perfect Power	40
Adams Enterprises	11	Eldrup Autobody	31	Lynch Porsche	8-9	PressTech	41
Bacinos	BC	Emmons Coachworks	40	Media Tech	6	Responsive Financial Services	40
Barrington Coach Haus	37	Fast Tech	32	Midwest Eurosport	5	Robotek	18
Big Brothers/Big Sisters	4	Fischer Motors	7	Moran-Schaefer Clinic	3	The Exchange	39
Body Werks of Barrington	21	Integrated Media Systems	31	Nives Rizza Porsche	22-23	Uniglobe	12
Chicago Historic Races	7	Icoda Raffle	17	Northstar Motorsports	IFC	WeatherTech	13
Dent Busters	12	James Cady Insurance	3	Paine Webber	7	Weissach Werks	11

Editors: David and Heather O'Bryan
527 North Spring Avenue
La Grange Park, IL 60526
Phone: 708-482-0502
Fax: 708-588-1785
Email: chicagoscene@pca-chicago.org

POSTMASTER:
Send address changes to:
Deborah Leed
37 Lakeview Drive
Barrington, IL 60010-1949

Cover Photo:
Photo by Chris Inglot from concours
at Cuneo Estate a few years ago.

The *Chicago Scene* is the monthly publication of the Porsche Club of America—Chicago Region, published at PressTech, 959 Lee Street, Des Plaines, IL 60016. Second class postage paid at Aurora, IL USPS 006-381-ISSN 10564195. Subscription is limited to members of the Porsche Club of America—Chicago Region. Porsche Club of America dues are \$36.00 annually, of which \$12.00 is for the subscription. Subscription rate for non-Chicago Region members is \$24.00

per year. Permission to reprint any material published herein is granted provided full credit is given to *Chicago Scene* and to the author. Porsche Club of America—Chicago Region is not responsible for any services or products advertised herein.

Statements appearing in the *Chicago Scene* are those of the author and do not constitute an opinion of the Porsche Club of America—Chicago Region or its board of directors.

DEADLINE: Material must be received by the 10th of the month for inclusion in the following month's issue and will be published on a space available basis.

ADVERTISING RATES: Business card: \$10 per month. Quarter page: \$35 per month. Third page: \$45 per month. Half page: \$55 per month. Three-quarter page: \$75 per month. Page: \$100 per month. Back cover and inside covers: \$110 per month. Please call, write, or e-mail for long term discount rates.

2000 Calendar of Events

January

23 Members meeting Bacino's

February

12 Social event Harry Caray's
House of Blues

March

12 Chili tasting/
Rallye & Concours schools
18 St. Patrick Social event
26 Tech session

April

2 Rallye 1
14 Social event
15 Autocross/Drivers school

May

7 Concours 1, Air Classics
18 Blackhawk Drivers Ed.,
Groups B&C
19 Blackhawk Drivers Ed.,
Women & Novices
21 Autocross/GYMKHANA 1
26-28 Road America Drivers' Education
Novices and Instructors

June

4 Rallye 2
10-11 Gingerman Drivers' Education
18 Concours 2, Navy Pier
21 Blackhawk
25 Autocross/GYMKHANA 2

July

2-8 Porsche Parade (Sacramento, California)
12 Blackhawk Drivers' Education
15 Golf & Dinner
16 Autocross/GYMKHANA 3
28 Fun Concours at Chi. Mtr. Spdwy w/CART

August

6 Concours 3 Potters Picnic
11 Rockford Under the Lights: Just for fun
Autocross
13 Rallye 3
16 Blackhawk Drivers' Education
20 Autocross/GYMKHANA 4

September

1-4 Labor Day Weekend, Road America Drivers
Ed, Club Race, Concours, Dinner Party
13 Blackhawk Drivers' Education
17 Autocross/GYMKHANA 5
23 Gimmick Rallye

October

1 Concours 5
7-8 Blackhawk Oktoberfest
Drivers' Education
28 Rallye 4
29 Rallye 5

November

5 Tech session
12 Social event, Wine tasting

December

9 Dinner Dance
31 Siebkens' New Year's Eve Party.

Behind the Scene

We have a bit of news to cover first. Bill Murrin resigned his region president position. We thank Bill for his service and wish him the best. The board appointed Dan Gallagher as president for the remainder of this year. Jim Jacisin will fill the emptied director position. Also, Tom and Phyllis also resigned their position as rallye coordinators. Jack Stephensen will take over that spot.

We also have a very exciting event being added to our calendars. Only Saturday, July 28th, we will be having another concours—this one

just for fun, not points. Some of you may notice that this date may conflict with your plans to watch the qualifying of the CART cars at the Chicago Motor Speedway. Well, guess what! That's where we are having this event! You will even be able to drive your very clean car around the track after the CART cars. Jim Jacisin will be providing more info on this soon!

We ask that any of you who attend events and would like to tell others what a great time you had to please submit an article (a couple paragraphs is sufficient—photos if you have them) to us. Thank you all in advance.

If you have anything for the Scene, please send an e-mail to us at chicagoscene@pca-chicago.org. This helps a great deal because we can

just copy and paste. However, if you must, the fax number is 708-588-1785. Please feel free to call us at 708-482-0502 as well (before 9P please).

Please note that we do this on a volunteer, on-our-own-time basis. Also, we do not check e-mail, voice mail, faxes every day, so please don't be discouraged if you don't hear back from us right away. We would like to think of it as fun, not work.

The best way to stay up-to-date with events is to check out the web page www.pca-chicago.org—try it now!

-David and Heather



Dnh Construction

REMODELING AND ADDITIONS
BATHS, KITCHENS, BASEMENTS
AND DECKS

Call Doug Coup at 847-426-8093

Chiropractic-Naprapathy-Massage Therapy-Acupuncture-Customized Vitamins

Moran-Schaefer Clinic

11111 W. Dundee Road
Wheeling, IL 60090
(847) 541-6648

Richard A.
Schaefer
Chiropractor

Amy McManaway
AMTA Certified Massage Therapist
Peter Lundberg
Certified Acupuncturist

BIG REDUCTION in insurance costs

for many high performance cars

(See lists below)

PREMIUM REDUCTION

NO LONGER RATED AS HIGH PERFORMANCE

Acura Legend Coupe	Lincoln Mark VII
Audi Quattro	Mazda 323 GT
BMW (all models)	Mazda 626 Turbo
Cadillac Allante	Mazda MX-6
Chevy Beretta GTZ	Mercedes - all models
Chevy Lumina Z34	Merkur XR4Ti
Chrysler LeBaron GTC	Mitsubishi Eclipse
Chrysler TC Turbo	Mitsubishi Mirage Turbo
Dodge Lancer Shelby Z	Olds Cutlass (Quad-4 HO)
Dodge Shadow Turbo	Plymouth RS Sundance
Dodge Spirit R/T	Pontiac Grand AM Quad 4
Eagle Talon	Pontiac Grand Prix Turbo STE
Ford T-Bird SC	Pontiac Sunbird GT
Ford Taurus SHO	Saab 900
Infiniti Q45	Toyota Celica Turbo - all types
Isuzu Impulse	Volkswagen Corrado
Jaguar XJS	



JAMES CADY AGENCY
525 W. Higgins (at Golf)
Hoffman Estates, IL 60195
847.490.1200

STILL RATED HIGH PERFORMANCE

Acura NSX	Mazda RX-7 Turbo
Buick Grand National GNX	Mazda RX-7 GTUS
Chevy Camaro IROC-Z	Mazda RX-7 GTU
Chevy Camaro IROC-Z Conv.	Mazda RX-7 GXL
Chevy Corvette	Maserati-all models
Chevy Corvette ZR-1	Mitsubishi 3000GT
Chevy Corvette L98 Coupe	Nissan 300ZX
Dodge Stealth RT Turbo	Plymouth Laser RS Turbo
Ferrari-all models	Pontiac Firebird Formula
Ford Mustang 5.0	Pontiac Trans Am GTA
Ford Mustang GT	Porsche-all models
Ford Probe GT	Toyota MR2 Turbo
GMC Cyclone	Toyota MR2 Supercharged
Lotus-all models	Toyota Supra

Auto, Home, Life, Commercial, Renters, Condo-Owners, Cycles, Boat, Etc...

Win this 2000 Porsche Boxster S or \$50,000 in Cash!



Only 2,000 tickets will be sold!

All proceeds from the June 24 drawing benefit Big Brothers Big Sisters of Lake County, Illinois...

Last year's response was a tremendous success. So once again, only 2,000 tickets will be sold — this time for a new 2000 Porsche Boxster S (or \$50,000 cash) — and one of 18 additional prizes totaling \$6,750.

Think of the odds. Nearly one of every 100 tickets is a winner! The Grand Prize ticket will be drawn on Saturday, June 24, 2000 at Motor Werks Porsche, corner of Barrington & Dundee Roads in Barrington, IL. 847-381-8900. Winners will be notified.



BIG BROTHERS BIG SISTERS®
of Lake County

Making a Big Difference, One Child at a Time.



CALL
TOLL-FREE
OR ENTER ON-LINE
www.bbbslc.org
800-718-KIDS

MSRP \$53,062. Winner responsible for any taxes, license, title or registration fees.
© 2000 Big Brothers Big Sisters of Lake County

Yes, I'll take ☐ One ☐ Two or ☐ _____ Tickets @ \$100 each

Total purchase: \$ _____. I understand you will fill out my stub(s) and enter me into the 2000 Porsche Boxster S Raffle and send me my raffle ticket(s) by mail. Drawing will be held June 24, 2000. Complete raffle rules available on request.

☐ AMEX ☐ VISA ☐ MasterCard ☐ Check enclosed ☐ Money Order enclosed

Card Acct # _____ Exp. Date _____

Name _____ Phone _____

Address _____

City/State/Zip _____

Make checks payable to: Big Brothers Big Sisters, 3701-G Grand Ave., Gurnee, Illinois 60031. Or order by credit card and mail or fax to: 847-360-0784. Or call toll-free today.

800-718-KIDS

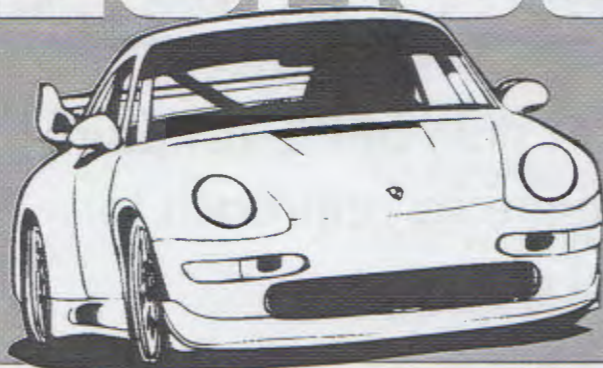
Call toll-free, Mon. thru Fri., 8 A.M. to 6 P.M. (CST)



midwest

EUROSPORT

Racing



Spahr Graphics!

Service & Race Prep

Street Car Maintenance

Engine Development & Dyno Testing

Suspension Tuning / JRZ Shocks

Transport And Trackside Support

Performance Modifications

Recaro Seating / Fikse Wheels

Motec Fuel Injection & Data Logging

Drack Data Logging

MIDWEST EUROSPORT INC

104 W Irving Pk Rd

Bensenville, IL. 60106

Phone 630-595-5577

Fax 630-595-8096

MEDIA TECH specializes in state-of-the-art paint removal utilizing a multi-media approach to eliminate panel distortion.



Whether you're racing a car or restoring it, preparation means everything. At MEDIA TECH we stock several different types of dry abrasives, this allows us to use different media in complimentary stages, leaving your project in spec and without distortion.

Visit our website at www.media-blast.com



Fischer Motors, Inc.

SPECIALISTS IN COMPETITION PERFORMANCE SERVICE

- High Performance Engine Work
- Hunter Wheel Alignment
- Race Suspension Tuning & Weight Balancing
- Transmission & Brake Conversions

Besides all sport related upgrades, we are a repair facility for German cars.

PORSCHE MERCEDES BENZ BMW VOLKSWAGEN AUDI

908 S. Northwest Highway (Rte. 14)
Between Lake Cook Roads & Dundee Road
Barrington, Illinois 60010
(847) 304-8822 - 8823

Weekdays 8 AM - 5 PM

Saturday 8 AM - 1 PM

**Get back on the
right track with
CHR 2000**

Chicago Historic Races Returns!

August 4-6th

**Gingerman Raceway
South Haven, Michigan**

**Fun for the whole family!
For more information or
a registration form
for this exciting event call**

**(312)-226-RACE
Limited Registration**

We know of one investment that always does well.

We believe one of the most profitable investments is an investment in relationships. At times like these, when the market can be volatile, that investment really pays off.

- Now is the time you need someone who understands your goals and risk tolerance.
- Someone who can help you adjust your portfolio in a changing investment environment.
- Someone who takes the time to ask the right questions, so together you can come up with the right answers.

If you want to talk to a Financial Advisor that truly understands the importance of a long-term relationship, call us at PaineWebber.

For information call Paul R. Joyaux, Financial Advisor,
at (800) 621-0684 or (312) 984-2392.

Thank you PaineWebber®

125 South Wacker, #2700, Chicago, IL 60606

© 1999 PaineWebber Incorporated. Member SIPC

Since 1938
Lynch
Auto Group



- Great Selection of New and Pre-driven Porsches
- Courteous, Knowledgeable Sales Professionals
- Factory Trained and Certified Service Technicians
- Extensive Porsche Parts Inventory



BOXSTERS • 911s • CARRERAS • TURBOS • TARGAS



BOXSTERS • 911s



Visit Us
on the
Web at:

golynch.com

Please Call for an Appointment
(773) 777-2000

SALES HOURS

Mon-Fri (9am-9pm)
Saturday (9am-6pm)

Since 1938
Lynch
Auto Group



SERVICE

Get it Fixed Right!



FRANK COLLINS

14 yr. Porsche Service Cup
District Winner

When you need service for your Porsche,
we want you to think of Lynch first.

The Lynch Service Pros will treat your
vehicle like it was their own. More importantly,
when you service your vehicle at Lynch, you are
guaranteed that the Lynch Service Professionals
will do everything possible to make sure that
you are always satisfied.

Our award winning service department has the
very best trained technicians to see to it that
your car is fixed right the first time.

With our trademark courteous service and our
low prices, we'll always leave you smiling.
Just give our Service Department a call at
(773) 794-7979 and schedule an appointment.

Your satisfaction is guaranteed by the Lynch
Porsche Service Pros for many years to come.
We look forward to serving you soon.

Visit Us
on the
Web at:

golynch.com

Please Call for an Appointment
(773) 794-7979

**SERVICE
HOURS**
Mon-Fri
(7am-7pm)



Lynch
Service with a Smile!

TOP 10 ?'s

By: Mary Anne Nowakowski

Many members have many of the same questions. The purpose of this article is to answer some of those questions. If you have a question please feel free to e-mail me at nowakowskim@permapipe.com. I will be happy to answer those that I can, or direct you to the Chicago Region's expert.

What does the Chicago Region of the Porsche Club do?

The Chicago Region of the Porsche Club of America (PCA) is one of the most active regions, and one of the largest. With over 1300 members, our events are structured to improve understanding and driving confidence in Porsche vehicles. We host over 40 events per year. These events include Driver Education, Technical Sessions, Concours, Autocross, Rallye, Club Racing, and Social events. The various venues allow for camaradery and friendship as well as exciting experiences for the Porsche owner and family members.

Are guests allowed at events?

Porsche members may bring guest spectators to events. The spectator will be required to sign our insurance waiver. At larger events, such as Road America, we recommend that guests arrive with the member, to sign the waiver and receive a wristband. If this is not possible, please provide a list of the names of your guests to the Event Chairperson or Registrar. No spectator fees are charged. Please remember that our events are private events, and not open to the general public.

What is the difference between a Family Member and an Affiliate Member?

At the time of joining PCA, the Member is permitted to

name either a member of his or her family to become a Family Member, or another interested person to become an Affiliate Member, at no additional cost. The Family or Affiliate Member is welcome to participate in Chicago Region events. Our event registration forms indicate participation fees for Member, and Family/Affiliate members. Family/Affiliate members may vote in Region elections, and may hold Regional office.

Can a Member sponsor a non-Porsche vehicle and driver in Chicago Region Driving Events?

The answer to this question depends on the type of event.

For Road America Memorial Day and Labor Day Driver Education events, only Porsche vehicles are allowed to participate. These are generally our most popular events, and sell out quickly.

For Blackhawk and Gingerman Driver Education events, Porsche's are given preference, but other two-door sport car vehicles may participate, at the discretion of the Event Coordinator. These events sell out quickly also. Chicago Region members driving a Porsche are given first priority on the waiting list.

Other Driver Education, Concours, Autocross and Rallye events are open to non-Porsche sport car vehicles at the discretion of the Event Coordinator.

Guests are always welcome at our Technical Sessions and Social events.

How do I get an "official" PCA Chicago Region name badge?

All members and their family/affiliate member are welcome to obtain their complementary name badges from the Membership Coordinator. E-mail Mary Anne Nowakowski at nowakowskim@permapipe.com, or fill out a Name Badge Request Form at an event. Additional name badges are available for purchase at \$5.00 each.

What is a "Permanent Car Number" and how do I get one?

All Driver Education and Autocross events require a car number to be displayed on the vehicle. This car number

(Continued on page 13)

(Continued from page 10)

is used by corner workers and Autocross timing and scoring to identify the vehicle. In the past, shoe polish on side windows was allowed for identification. The Chicago Region has banned shoe polish numbers, as they are unreadable. Permanent Car Number assignments are available from Ed Leed, at Leedlast@hotmail.com. Let Ed know your first, second, third, fourth, and fifth choices for your three-digit car number. Zero through 225 are no longer available, and neither are cool, easy numbers like 911, 915, 944, 993, 996, or 777. Numbers 603 through 650 are reserved for temporary event numbers.

How do I display my "Permanent Car Number" on my Porsche?

Since you may wish to remove your number after a driving event, painted numbers may not be the best solution. Removable numbers may be magnetic, vinyl adhesive or static cling. Static cling numbers have a habit of blowing off at higher speeds. Magnetic backed numbers stay on at speeds, but may cause paint scratches. Vinyl numbers will not blow off, and can be removed after an event, but are more costly. Local sign and banner printers can help you with media selection. Call around for prices. I found a great range in quoted prices for the same type of magnetic numbers. All vehicles participating at Driver Education events at Road America, Blackhawk and Gingerman must display the car number on each side of the car and on the front hood. Numbers must be at least 6" tall on the sides, and at least 8" tall on the hood.

Where can I buy Chicago Region PCA apparel and stuff?

R. A. Adams
ENTERPRISES, INC.

TRAILERS • HITCHES • TRUCK EQUIPMENT

RICHARD A. ADAMS, SR.

815-385-5970

Fax 815-385-6684
2600 W. Route 120
McHenry, IL 60050

As of January 2000, the Chicago Region Goodie Store is up and running to provide unique apparel and items for the Chicago Region and Porsche enthusiast. Apparel items may be ordered and personalized with name, car number, license plate etc. Samples are available for review. Additional nifty items like license plate frames, flags, bags, and watches, to name a few, are also available. Keep the Goodie Store in mind for unique items for yourself and great gifts for your loved ones.

For more information and to place an order, contact the Goodie Store Coordinator, Karen Hackenson at e-mail phackenson@hotmail.com.

What is Tech Inspection?

Technical Inspection is a visual inspection of participating vehicles at a PCA Chicago Region event, to ensure safety of driver and vehicle. The Tech Team will review the vehicle with emphasis on tires, wheels, brakes, functioning brake lights, suspension, wheel bearings, brake fluid, and removal of all loose items from vehicle. The participants helmet is examined for compliance with SA Snell date ratings. A copy of the PCA Chicago Region Technical Inspection Sheet is included in each issue of the Scene. It's a good idea to give a copy of this inspection sheet to your mechanic along with information on which event(s) you will be participating in. For additional information on Tech, contact Pete Hackenson, Technical Coordinator, at e-mail phackenson@hotmail.com.

How can I get more involved?

The Chicago Region of the Porsche Club is fortunate, as

(Continued on page 12)



WEISSACH WERKS

**EXCELLENCE IN LEISURE
SPORTSWEAR**

**PROVIDERS OF UNIQUE EMBROIDERY
AND QUALITY GARMENTS**

PLEASE CONTACT US FOR A FREE CATALOGUE

TOLL FREE: 1 888 668-4451

E-MAIL: WEISSACH@MARS.ARK.COM

(Continued from page 11)

it is the largest region in the Midwest. The Board of Directors, Coordinators, and all Event Committee members are volunteers. Every one you come in contact with is a volunteer. We would be happy to welcome anyone who wishes to lend a hand. If you are interested in helping out with an event, Tech Inspection, Scene article, corner worker, or in any other way, your effort is appreciated. It's a great way to meet and get to know other club members.

UNIQUE

Alaska Cruise Pacific Travel Ltd.

and

Pacific North West
travel specialist

James Wright
Travel Consultant

Tel: (250) 386-0394
Direct Line: 1-888-421-4451
B.C. Reg. No.: 2591-1

PCA Member Vancouver Island Region

dent-free?

dentbusters removes the
dents & dings from your
vehicle without painting.
usually in one day.

repairs start at \$75.00 and
free loaner cars are
available as well
as free local
pick-up/ delivery.

DENTBUSTERS
paintless dent removal



www.dentbusters.com

1.800.475.DENT

email: info@dentbusters.com

since 1991,

dentbusters

has served over

250,000

vehicles,

all makes

& models.

auto body

located in naperville,
dentbusters auto body
shop offers quality
workmanship on both
auto & truck body repair.

insurance work is accepted &
rental assistance is available.

lifetime warranty.

Stop by one of our shops in Naperville,
Addison, Wheeling, Streamwood, Orland Park
or Chicago for your FREE estimate!

ADDRESS CHANGE FORM

Name(s): _____

Old Address: _____

New Address: _____

Phones: (H) _____

(W) _____

(Area Code)

(New ?)

(Area Code)

(New ?)

e-mail: _____

Send to: Debby Leed, 37 Lakeview Drive, Barrington, IL 60010-1949 fax 847.382.3562 (8:00 am - 8:00 p.m. only please!) or e-mail: Leedlast@hotmail.com

The Ultimate in Vehicle Accessories!

WeatherTech® Floor Mats

Only WeatherTech® gives you all season protection you can rely on and much more.
WeatherTech® Floor Mats...

- Offer truly effective carpet protection.
- Have deeply sculpted channels to trap water, road salt, mud and sand.
- Are made of up to 16 lbs. of pliable virgin rubber.
- Won't curl, crack, or harden, even in sub-zero weather.
- Come in **Black, Tan or Grey** to compliment virtually any interior color.
- Hold up to 1½ quarts of water without spilling.

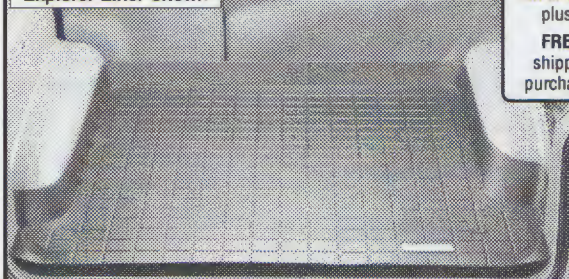
All WeatherTech® Floor Mats come with a protective, non-stick finish which makes cleanup quick and easy.

WE HAVE MATS TO FIT ALMOST ALL DOMESTIC AND IMPORTED AUTOMOBILES, TRUCKS, MINIVANS, AND SPORT UTILITY VEHICLES:

Acura • Alfa Romeo • AMC • AM General • Audi • Avanti • Bentley • BMW • Buick • Cadillac • Chevrolet
Chrysler • Daewoo • Daihatsu • Dodge • Eagle • Fiat • Ford • Geo • GMC • Honda • Hyundai • Infiniti
Inter'l Scout • Isuzu • Jaguar • Jeep • Kia • Land Rover • Lexus • Lincoln • Lotus • Mazda • Mercedes
Mercury • Merkur • Mitsubishi • Nissan • Oldsmobile • Peugeot • Plymouth • Pontiac • Porsche
Renault • Rolls Royce • Saab • Saturn • Sterling • Subaru • Suzuki • Toyota • VW • Volvo

WeatherTech® Cargo Liners

Explorer Liner Shown



**Cargo Liners
Starting From
\$69.95**

Tan or Grey, add \$10.00
plus \$9 shipping

FREE cargo liner
shipping when you
purchase floor mats*

- For either sub-zero winter or hot summer temperatures.
- To cleanup quick and easy.
- Not to crack or break as long as you own your vehicle, guaranteed.

WeatherTech® Cargo Liners are perfect for hauling gardening supplies, fishing gear, construction materials, golf clubs, or the family pet.

**Available in Black, Tan or Grey for
select applications.**

**Visit us Online
WeatherTech.com**

SPORT UTILITY LINER APPLICATIONS:

Blazer • Bravada • Bronco • Cherokee • County • CR-V • Denali • Discovery • Durango • Envoy • Escalade • Excursion
Expedition • Explorer • Grand Cherokee • Grand Vitara • Jimmy • LandCruiser • LX450 • LX470 • ML320 • ML430
Montero • Montero Sport • Mountaineer • Navigator • Navajo • Pathfinder • Passport • QX4 • Range Rover 4.0
SE/4.6 HSE • RAV4 • Rodeo • RX300 • Sidekick • SLX • Sportage • Suburban • Tahoe • Tracker • Trooper • Vitara
Wrangler • Yukon • X5 • Xterra • 4Runner

VAN / MINIVAN LINER APPLICATIONS:

Aerostar (Ext.) • Astro (Ext.) • Caravan • Club Wagon/Econoline Wagon • Montana • MPV • Oasis • Odyssey • Previa
Quest • Safari (Ext.) • Silhouette • Sienna • T & C • Trans Sport • Venture • Villager • Voyager • Windstar

AUTOMOBILE LINER APPLICATIONS:

A4 • A6 • Accord • Altima • Avalon • Beetle • BMW 3, 5, 7 Series • Camry • Celica • Civic • CL • Corolla • Concorde
Continental • Corvette • Crown Victoria • DeVille • Echo • Eldorado • Escort • ES300 • Focus • Golf/Golf III • GS300
GS400 • I30 • Integra • Intrepid • Jetta/Jetta III • Legacy Wgn/Legacy Outback Wgn. • LS/LS1/LS2 • LS400
LW1/LW2 • Maxima • Mercedes "C," "E," "S" Class • Passat • PT Cruiser • S70 • Saab 900 Sable • Seville
SC/SC1/SC2 • SL/SL1/SL2 • SW1/SW2 • S40 • Taurus • Tercel • TL • Town Car • V40 • V70 • V90 • Vision
740/760/940/960 • B50 • B54

(TAN AND GREY CARGO LINERS AVAILABLE FOR SELECT APPLICATIONS)

WeatherTech® WeatherFlectors™

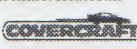
- Maximize your fresh air enjoyment
- Optically transparent
- Sleek-aerodynamic OEM styling and quality
- Reduces wind noise
- Installs quickly and easily inside the window channel using a precision-machined, micro-thin mounting flange
- No unsightly exterior tape
- Minimizes interior heat when parked

And with the WeatherTech® WeatherFlectors™ being TÜV approved, it is clearly your finest choice!

WE HAVE WEATHERFLECTORS™ TO FIT ALMOST ALL DOMESTIC AND IMPORTED AUTOMOBILES, LIGHT TRUCKS, MINIVANS, AND SPORT UTILITY VEHICLES:

Acura • Audi • BMW • Buick • Cadillac • Chevrolet • Chrysler • Daewoo • Dodge • Eagle • Ford • Geo • GMC • Honda • Hyundai
Infiniti • Isuzu • Jaguar • Jeep • Kia • Land Rover • Lexus • Lincoln • Mazda • Mercedes • Mercury • Mitsubishi • Nissan
Oldsmobile • Plymouth • Pontiac • Saab • Saturn • Suzuki • Toyota • VW • Volvo

We also carry products from these fine companies, see them on our website at www.weathertech.com:



* We pay regular shipping within the 48 contiguous states, when shipped to the same address on additional sets of floor mats or a cargo liner when purchased in combination with a set of front floor mats; or additional sets of WeatherFlectors™ when purchased in combination with a set of front WeatherFlectors™. **WE GUARANTEE YOUR SATISFACTION.** If you are not satisfied with your order, call to return your unused product within 30 days for a complete refund, less shipping & packaging.

Photography by: Richard Izui, Chicago

Available in Black, Tan or Grey.



Front Floor
Mat Set

\$44.95

Tan or Grey,
add \$5.00
plus \$8 shipping

2nd set ships **FREE***

Front & Rear
Mat Set

\$79.95

Tan or Grey,
add \$10.00
plus \$8 shipping

Rear set ships **FREE***

Venture Floor Mats Shown

CenterLoc™ Floor Mats Available for Most Popular Minivans!

And with WeatherTech® Cargo Liners you get even more protection. **They are designed...**

- To protect the rear cargo area carpeting from all types of wear and tear.
- With a raised lip to help contain spills.
- In **Black, Tan or Grey** for select applications to compliment virtually any interior color.

MacNeil
AUTOMOTIVE
PRODUCTS LIMITED

2435 Wisconsin Street
Downers Grove, IL 60515

630-769-1500 fax 630-769-0300
1-800-441-6287

**ORDER TODAY:
1 (800) 441-6287**

Representatives are available:
Monday through Friday — 7 AM -11 PM
Saturday — 8 AM -11 PM
Sunday — 8 AM -10 PM (Central Time)



Canadian Customers Call:
1 (800) 378-6287

We normally ship within 48 hours.
Express shipping available.

WeatherFlector™
Front Set

\$44.95

plus \$8 shipping
2nd set ships **FREE***

WeatherFlector™
Front & Rear Set

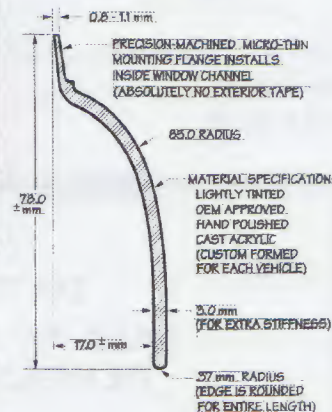
\$79.95

plus \$8 shipping
Rear set ships
FREE*

Tahoe WeatherFlectors™ Shown

**No Exterior
Tape Needed!**

THE SECRET



Welcome New PCA Members—April

James Billy
Streamwood, IL
1969 911 E

William F. Brindell
Dundee, IL
2000 Boxster

Donald T. Elliott
Northbrook, IL
1987 928 S4

Robert J. Elmlade
Chicago, IL
1999 Boxster

Dane L. Gamble
St. Charles, IL
2000 996 C2 Carrera

Charles Graziani
Northfield, IL
1989 930 Turbo

John M. Heffron
Elmhurst, IL
1975 911 S

Christopher Howard
Chicago, IL
1999 Boxster

Darryl Hughes
Oak Park, IL
1989 911 Targa

Harris H. Jackson
Winnetka
1963 356B

Jeff Jarrett
Wheaton, IL
2000 Boxster S

Richard Kray
Elgin, IL
2000 996 Cabriolet

Jeffrey M. Mann
Chicago, IL
2000 996 Carrera

Troy Monthye
River Forest, IL
1990 911 C2

Robert Moore
Niles, IL
1993 928

William Moss
Deerfield, IL
1995 993

Gerald P. Murray
Riverside, IL
1987 944 Turbo

Vincent J. Najowski
Rolling Meadows, IL
2000 Boxster

Rod Nelson
Geneva, IL
1979 911 SC

Mark A. Perlow
Chicago, IL
2000 996 C2 Cabriolet

Scott Rachford
New Lenox, IL
1994 911 Turbo

Nelson Radcliffe
Lemont, IL
2000 Boxster

William J. Reichert
Crete, IL
2000 996 Carrera

Michael S. Rich
Naperville, IL
1991 911 C2

Mark Richard
Antioch, IL
1997 Boxster

Edward M. Roney
Barrington, IL
2000 996 Carrera 4

Daniel Shmikler
Chicago, IL
1997 Boxster

Thomas J. Simmons
Chicago, IL
1984 911 Carrera

Ian Stone
Deer Park, IL
1987 911 Carrera

Scott C. Van Lyssel
Chicago, IL
2000 Boxster

DINE AROUND

DATE: SUNDAY, NOVEMBER 12TH TIME: 3:00 P.M.
CAFE "36" 2224 CALENDER COURT LAGRANGE, IL (708) 354-5722
DETAILS TO FOLLOW: ILENE WOUSTOPAL - (847)291-1192

On SUNDAY June 4th we are "ONTO DIE BIERSTUBE" A PCA—Chicago Region Rallye

Start:
Tone's Roadhouse
Countryside, IL

Finish: Die Bierstube
Frankfort, IL

Registration opens: 10:30 a.m.
Driver's Meeting: 11:00 a.m.
First Car Off: 11:31 a.m.

Family style dinner includes wiener schnitzel, smoked
pork chop, warner schnitzel, sausage, soup, cabbage,
etc.

The Umpah Band will be playing!

Directions to Tone's: From the North, 294 South to St. Louis (I55) exit, after \$0.15 toll, take middle fork Joliet Rd. exit, approx. 2 1/4 miles to Tone's on right (across from the Flame).

From the South, 294 North to Wolf Rd. exit (fork to the left), right to Joliet Rd. right on Joliet approx 2 miles to Tone's.

From the West: I55 North to exit 276C Joliet (Exit on Left), 2 1/2 miles to Tone's on right.

From the East: I55 South to 1st Ave. North, exit Joliet Rd., follow detour 3 miles to Tone's on left.

Rallye Fee: \$20 per car Post-Rallye Dinner: \$21.00 per person, Dinner Buffet, Cash Bar

Questions ???
Dan Gallagher
708-784-0784

Mail Registration to:

Dan Gallagher, 11156 Indian Woods Drive, Indian Head Park, IL 60525

Driver: _____ Phone # _____

E-mail: _____

Member _____ Applicant _____ Guest of _____

Navigator: _____ Phone # _____

Member _____ Applicant _____ Guest of _____

Car Model _____ Color _____ SOP _____ Touring _____

Rallye Car Fee: \$20.00

_____ # of Dinners @ \$21.00: \$ _____

Amount Enclosed: \$ _____

Please make checks payable to: PCA—Chicago Region

GET THE WINNING EDGE



When Porsche AG Races in America, they choose Kelly-Moss for support. We can help with your racing needs, too! Call today.

Kelly-Moss Motorsports knows what it takes to win.

Veteran racers David & Jeff Stone have a phenomenal track record for winning. After all, they've spent the last eleven years building Kelly-Moss into what it is today. And now you can put their experience to work for you.

Kelly-Moss Motorsports offers full track side service.

They can help you with everything from minor modifications to complete race car builds. Call them today – or stop by to say hello at Road America and meet representatives from Porsche, plus pro drivers David Murry and Elliott Forbes Robinson

A Track Record That Speaks For Itself!

- 18 Professional Race Wins
- 1994 Porsche Cup Winner
- Three IMSA/S.C.C.A. PRO SERIES National Championship Titles
- Over 100,000 miles of racing!

KELLY-MOSS MOTORSPORTS



PORSCHE RACING SPECIALISTS

3017 PERRY ST. MADISON WI. 53713 PH. 608/2745054 FAX 608/2746252

The Millennium Raffle

to benefit

icoda

Grand Prize

**2000 BMW Z3
Convertible**

or

\$30,000 Cash

ONLY 1,000 TICKETS WILL BE SOLD  TICKETS - \$100

All Raffle Proceeds Benefit

international center on deafness and the arts

The drawing will be *November 4, 2000*

at Fields BMW 670 Frontage Road • Northfield, IL 60093

Prize winners need not be present to win. Winners assume all applicable license and delivery fees, state and federal taxes and optional upgrades. No one under the age of 18 may participate. ICODA reserves the right to withdraw the offering and refund all proceeds. For more information call Marlys at 847-562-1853 or Judy at 847-564-1232.

Ticket Order form- Make tax deductible check payable to and mail to: icoda 3444 Dundee Rd., Northbrook, IL 60062

NAME _____

ADDRESS _____

PHONE NO _____

ZIP _____

Payment Method (Check One) ☐ VISA ☐ MASTERCARD ☐ CHECK

Credit Card # _____

EXP. Date _____

Signature _____

No. of Tickets: _____

Blackhawk XXXI

Blackhawk Farms Raceway, South Beloit, IL

June 21, July 12, Aug 16, and Sep 13

Mandatory clothing for all drivers at this event include a Snell approved SA 1990 helmet, long sleeve shirt, long pants, and socks, all made of non-synthetic material, and closed toe shoes. Recommended, but not necessary items include driving suits, driving gloves, driving shoes, and protective neck brace all made of Nomex or similar fire-resistant materials. Please check the dates on your helmets now. There will NOT be loaner helmets available. If your helmet does not pass inspection, you will not drive.

To save time at the track, you may bring a completed Chicago region Tech sheet signed by a recognized Porsche dealer or mechanic. Be certain to pay close attention to the specifics concerning brake fluid and pads.

Every Blackhawk event is a sell out. Please pre-register (with payment) to ensure a spot in these events. Waiting lists will be used to fill open spots.

Directions: Northwest Tollway (I-90) North to IL 75 (just before WI border). West on IL 75 to T (Blackhawk Road). Right to Shirland. Left on Shirland to Fischer. Left on Fisher to T (Prairie). Left at T—track entrance on right.

Alternate directions: Northwest Tollway (I-90) North to Rockton Road exit. West on Rockton Road to Prairie Avenue (after the Rock River and S. Bluff Road). Right on Prairie. Track entrance on left about 8/10 mile from intersection.

Please note that I-90 may be under construction. Please plan ahead and consider other routes or allow ample time.

For more Blackhawk info, check out:

<http://www.na-motorsports.com/Tracks/Blackhawk.html>

8:00—9:30 a.m.	Registration
8:00—10:00	Tech Open
9:00—9:30	Open circulation for groups A&B
9:00—9:30	Student Class Room Instruction
9:35—9:50	Driver's meeting—Mandatory
9:50—10:00	Instructors' & Students' meeting
10:00—10:30	Novice Instruction
10:30—11:00	Group C
11:00—11:30	A
11:30—12:00	B
12:00—12:30	C
12:30—1:00	A
1:00—1:30	B
1:30—2:00	C
2:00—2:30	A
2:30—3:00	B
3:00—3:30	A
3:30—4:00	C
4:00—4:30	B
4:30—5:00	Refreshments at track
5:30—7:30	Dinner Location TBA

RACERS:

FASTER CORNERS!

Now From Robotek

**911 SOLID ENGINE MOUNTS
UNIQUE DESIGN PROVIDES
LOWER CENTER OF GRAVITY**

In addition to crisp response, now get center of gravity lower than tire clearance and/or shock travel allow. Special design utilizing aircraft billet aluminum will relocate engine and transmission 1/4 inch lower in chassis for better cornering grip.

Set of 4 **\$199.00**

**PROVEN AGAIN AND AGAIN IN
THE HEAT OF COMPETITION
FLAWLESS SHIFTING**

with **SureShift 915**

Rapid and positive shifting for 915 transmissions. Don't damage your engine or 915 transmission during the intensity of a race. Spring-loaded SureShift allows you to make precise fast shifts to the gear of your choice with confidence.

\$299.00

More products to come!

by **ROBOTEK**
TRACK PROVEN

1-815-943-1461

3 North Lincoln Street Harvard, IL 60033

Registration form for June and July Blackhawk Events

Car Make/Year: _____

Car Model: _____

First Driver Name _____

Phone number _____ e-mail _____

☐ Member ☐ Applicant ☐ Guest of _____

☐ A ☐ B ☐ C ☐ Instructor ☐ Novice ☐ Women's Permanent Car Number _____

Previous Experience _____

Second Driver Name _____

Phone number _____ e-mail _____

☐ Member ☐ Applicant ☐ Guest of _____

☐ A ☐ B ☐ C ☐ Instructor ☐ Novice ☐ Women's Permanent Car Number _____

Previous Experience _____

Fees:

<input type="checkbox"/> Wednesday, June 21, 2000	A, B, C	\$130 Pre-registered, \$145 at the gate.
<input type="checkbox"/> Wednesday, July 12, 2000	A, B, C	\$130 Pre-registered, \$145 at the gate.
<input type="checkbox"/> Wednesday, August 16, 2000	A, B, C	\$130 Pre-registered, \$145 at the gate.

Please make check payable to PCA—Chicago Region
Separate checks for each event date required!
Do not combine payment for different dates!

Total: \$ _____

Registration forms with payment to:

Peggy Gallagher
11156 Indian Woods Drive
Indian Head Park, IL 60525

Confirmations will only be sent via e-mail. Be sure to include your e-mail address on this form.
Questions, call Dan Gallagher at 708-784-0784

PCA Chicago Region Technical Inspection Sheet

NAME: _____ CAR COLOR: _____ RUN CLASS: _____
MODEL/YEAR: _____ ENG. DISP.: _____ PERM. CAR #: _____

Pass Fail !! TO BE INSPECTED BY ENTRANT PRIOR TO EVENT !!!

- _____ 1. **HELMET, SNELL SA 95** or later required for all **track events** including Blackhawk, Road America, and GingerMan (sticker must be attached inside). *SA 95 for Yr. 2000*
- _____ 1A. **HELMET, SNELL SA or M 90** or later required for all **autocross or gymkhana** events (sticker must be attached inside). *M 90 for Yr. 2000*
- _____ 2. **APPAREL** - Full-length pants, long sleeved cotton shirts, cotton socks and full coverage shoes are mandatory. Highly recommended, but not mandatory are drivers' suits, driving gloves and shoes all made of Nomex or similar fire-resistant materials
- _____ 3. **SEAT BELTS** - Original factory installation; or securely anchored metal-to-metal for both driver and passenger, large diameter washers on both sides of floor mounting holes, swivels have eyes welded closed; five or six point harnesses required for Any Class except Novice at Road America and highly recommended for all events.
- _____ 4. **FIRE EXTINGUISHER** - Recommended but not required. Securely anchored metal-to-metal in reach of driver. BC or ABC rated and fully charged. Halon recommended.
- _____ 5. **ROLL BAR** - All open cars except 914's, Targas, and cars in the Production class.
- _____ 6. **PEDALS** - Free return and in good operating condition. Firm brake pedal.
- _____ 7. **LOOSE OBJECTS** - Remove all loose items from trunk and interior, including glove compartment, door pockets, console, etc.
- _____ 8. **WINDSHIELD** - No cracks. Functional wipers with good blades.
- _____ 9. **MIRRORS** - At least one securely mounted rear view mirror.
- _____ 10. **GAS CAP** - Gasket intact and cap tightened.
- _____ 11. **RUST** - No rust or damage to suspension or chassis parts that affect the integrity of the chassis or brakes.
- _____ 12. **FRONT SUSPENSION** - No excessive looseness in steering or suspension. Lower trailing arm to radius tight; axle and shock bolt tight. Ball joints in good condition. Tie rods secure. Axle boots and oil seals in good condition.
- _____ 13. **WHEEL BEARINGS** - Correct adjustment, check for proper lubrication, no damaged or burnt bearings.
- _____ 14. **BRAKES** - Sufficient brake linings or pads. No cuts or abrasions in brake lines. Check rotor condition. Brake pad thickness will be checked periodically for 2mm minimum thickness throughout the high speed events. Make sure you start with ample brake pad material and/or bring an extra set of pads. It is recommended you start with fresh competition pads properly bedded in.
- _____ 15. **WHEELS** - No cracks. No bends. All lug nuts torqued to 90 - 96 lbs. Valve stem must have airtight cap. Hubcaps removed.
- _____ 16. **TIRES** - Good condition. No cracks or bulges. NR or better recommended. Factory recommended tire pressure or better. Minimum tread depth 3/32" on contact patch area (exceptions may be made for race tires or shaved performance tires at the discretion of the event organizers.) Spare removed or secured.
- _____ 17. **REAR SUSPENSION** - Check half shaft bolts and shock bolts. 914's check fuel pump and lines. No positive camber.
- _____ 18. **BRAKE FLUID** - Level up, must show in reservoir. All cars must have their brake systems flushed with DOT 4 specification or better brake fluid 90 days or less preceding the high speed event. If an other high speed event is run less than 90 days prior to this event, then the fluid must be flushed again before running.
- _____ 19. **BATTERY(IES)** - Securely fastened and in good condition; no acid leaks or corrosion. Check fuel lines under battery trays on 914's.
- _____ 20. **ENGINE** - Check for odd sounds and satisfactory exhaust. (Remember 108db sound limit at Road America.)
- _____ 21. **DRIVE BELTS** - Tight and in good condition.
- _____ 22. **LEAKS** - No leaks of any fluid - oil, gas, brake, or coolant.
- _____ 23. **THROTTLE RETURN** - Freely operating and good springs. Check both throttle return springs on CIS cars.
- _____ 24. **BRAKE LIGHTS** - Functional.

Helmet Requirements!

In consideration of my participation in this event, I have checked the above items and certify that they meet or exceed the requirements. I agree to indemnify and hold harmless the organizers of the event, or their agents, with respect to responsibility for the condition and preparation of my car, or any subsequent mechanical failures or resulting damage to my car or its occupants as a result of any such failures. I acknowledge that at all times I remain solely responsible for the safety and road worthiness of my car. I hereby certify that I have no physical or mental problems which could jeopardize myself or others if I participate in this event.

ALL OF THE ITEMS ON THIS TECH SHEET HAVE BEEN TESTED AND SERVICED AS DESCRIBED. THE TECH INSPECTOR'S SIGNATURE BELOW DOES NOT IMPLY COMPLIANCE WITH THE ABOVE AND IS ONLY AS WITNESS TO THE DRIVER'S SIGNATURE WHICH WARRANTS COMPLIANCE.

DRIVER'S SIGNATURE: _____

DATE: _____

WITNESS TO DRIVER'S SIGNATURE: _____

DATE: _____

6/99

Autocross II

Sunday. June 25th

Lake Geneva Raceway

Lake Geneva, WI

Snell 90 helmet and closed shoes also are mandatory

Time-	9-10:15	registration
	10:15	drivers meeting
	10:30	first car off

Fees:

First driver - \$25.00 member / \$30.00 non-member guest-member must be present
Second driver - \$10.00 Family / \$25.00 member / \$30.00 non-member guest—member must be present
Please note only one guest per member is allowed. Two-door non-Porsches are allowed at this event (as well as all Porsches, regardless of number of doors).

Mail registration to (Checks payable to *PCA-Chicago Region*): Keith Clark, 733 Medford Drive, Carol Stream, IL 60188 Ph: 630-690-3381

Driver 1 _____ Phone Number _____
Driver 2 _____ Phone Number _____

Total Enclosed _____

Body Werks of Barrington

For the Finest in
PORSCHE, MERCEDES and BMW
Work and Painting

DESI VINCZEN • 126 Cook Street • Barrington, IL
381-9144



Nive Pors

BOXSTER

CARRERA

TURBO

TARGA

911

PROFESSION



Aaron Zelinski
Porsche Sales Mgr.



Anthony
Porsche Sales Mgr.



NIVES RI

PORSCHE

es Rizza The Fastest Growing **rsche** Porsche Dealer In The U.S.A.

- Great Selection & Prices
- Large Pre-Driven Porsche Inventory
- Huge State-of-the-Art Service Department
- Giant Porsche Parts Inventory
- Factory Trained & Certified Technicians
- Free Service Loaner

**Be Sure
To Attend Our
Porsche Clinic
on April 29th!**
Call for details.

SIONAL PORSCHE CONSULTANTS



Anthony Rizza
Porsche Sales



Mark Berry
Porsche Sales



George Serritella
Porsche Sales



Frank Torres
Porsche Sales



Tim Craft
Porsche Sales



Bob Galen
Porsche Service

RIZZA

HE

**159th Street & 80th Avenue
ORLAND PARK
708 403-0300**

SHOWROOM HOURS:
Daily 9-9:30 & Saturday 9-7:30



www.rizzacars.com

Gingerman '00—June 10th and 11th

We will be returning to that summer getaway town of South Haven, MI and the famous Gingerman Raceway for the weekend of **June 10th and 11th**.

Don't miss this event! South Haven is a wonderful community comprised of quaint shops, the beach, and restaurants—much to see and do!

The driving event will be similar in structure to our other track events. Drivers will be divided into groups based on ability, type of car, and the willingness to play (nice) with others. Novices are welcome and will be assigned an instructor for the weekend. Registration begins at the track on Friday, June 9th from 4:00 p.m. to 7:00 p.m. EST, and on Saturday from 8:00 a.m. until 11:00 a.m. EST. We have tentatively planned an open practise on Friday, June 9th available at a separate cost. The open practise is run solely by the track management, not the PCA-Chicago Region.

In Order To Participate, You Must Have:

- A valid drivers license
- Snell-Approved Helmet, 90 or newer
- Long-sleeved shirt, long pants, socks, and closed-toe shoes—all of non synthetic material
- A relaxed attitude

There will be a mandatory drivers' meeting at the track both Saturday and Sunday mornings, beginning promptly at 8:00 a.m. If you wish to drive, you must attend.

Technical safety inspection of your car is your responsibility. You will find the Chicago Region Tech Sheet in this issue of the Scene. Please carefully inspect your car, or bring a note from your mechanic (A signed tech sheet is preferred). Any questions concerning tech should be addressed to Pete Hackenson at 630-655-1629.

Due to the lack of in-town parking, the track premises will be open Friday, June 9th for trailers, cars, or support vehicles to be parked and locked in the secure confines of the track.

Feel free to call us with your questions. See you in June!

Jeff, Jill, and Max Girard

First Driver:

Name: _____

Address: _____

City, State, Zip: _____

Day/Eve Phone: _____

Member Y__ N__ Region ____

Fastest-Run Group Req.-Slowest

Porsche Yr/Model/Type Eng. Size:

PCR Class: Production __ Improved __ Modified__

Permanent Chicago Region Car No.: _____

Second Driver (family member):

Name: _____

Address: _____

City, State, Zip: _____

Day/Eve Phone: _____

Member Y__ N__ Region ____

Fastest-Run Group Req.-Slowest

Requested Car No.: _____

To help us better classify car/driver combo, please specify your driving experience. Include number of track days per year, professional driving scholls attended, and typical lap times:

Fee: 1 Driver \$190, 2 Drivers (same car) \$230, 2 Drivers (separate cars) \$380

Mail to: Jeff Girard
8630 Lemont Road
Darien, IL 60561

Ph/Fx: 630-985-6739

Father's Day Concours Porsches @ Navy Pier

Come join us for Concours Two on **Father's Day, June 18** @ Navy Pier, Chicago Illinois.

This is an event that the whole family can enjoy! Navy Pier is more than 50 acres of parks, promenades, gardens, shops and entertainment attractions. It's the magnificent Skyline Stage. It's the Crystal Gardens, a six story, glass enclosed botanical garden. It's the historic Grand Ballroom, with its 80 foot domed ceiling. Navy Pier boasts the Childrens' Museum, the IMAX Theatre and the new Shakespeare Theatre. And there is the famous landmark 15 story Ferris wheel. It's Odyssey Cruise Ships, Sea Dogs High Speed Boat Rides, Restaurants, Shops and Music Stages. It's a view of the skyline line you will never forget. It's something for everyone! And again this year, Porsches!

Directions: Navy Pier is located at Lake Shore Drive and Illinois Street in downtown Chicago. Once at Navy Pier, follow the signs to the parking garage along the North end of the Pier. Once you have registered, you will be allowed entry to pass through the traffic gates and drive to the far East end of Navy Pier for car placement, final prep and a breathtaking view.

10:00 am: Cars may begin arriving at Navy Pier

12:00 pm: Judging begins

3:00 pm: Trophy presentations

Class A: Exterior, Interior, Trunk, Engine & Undercarriage

Class B: Exterior, Interior, Trunk & Engine

Class C: Exterior, Interior & Trunk

Class D: Exterior & Interior

Class E: Exhibition Style of Exterior & Interior. Visual Inspection Only

Novice: For fun & first time participants only.

Judged to Class C standards, novice class winner is eligible to trophy.

So get a bucket of water, wash off the Porsche, grab Dad and the whole family and join us to celebrate Father's Day and the Summer Solstice at Navy Pier June 18.

Questions? Call Jim Jacisin @ 630-279-4835

Navy Pier Concours Fee \$20 per car

Please make checks payable to: **PCA Chicago Region**

c/o Jim Jacisin 508 Rex Blvd., Elmhurst IL 60126

Name _____

Address _____

City _____ State _____ Zip _____

Phone () _____ Region _____

PORSCHE Model _____ Body Style _____ Year _____

Class A B C D E Novice _____





Announcing T.R.A.C. 2000 ...

The Road America Challenge), the Chicago Region's Drivers' Education and eighth annual PCA Club Race event to be held over the Labor Day weekend.

This year marks the 50th anniversary of racing at Elkhart Lake's Road America and we hope you can join us in September for what always proves to be a fun and memorable event. At four miles in length, Road America is the longest road course in North America. It contains fourteen turns and three long straights through the Kettle Moraine section of central Wisconsin making it one of the most scenic, challenging and exciting tracks in the world.

This will be our second event at Road America in 2000 with a brand new format. Instead of three days, the event will now take place over the course of four days and feature two separate driving events in order to accommodate more participants. The Club Race portion of the weekend will be held on Friday, September 1st and Saturday, September 2nd followed by the Drivers' Education portion on Sunday, September 3rd and Monday, September 4th. This new format will allow us to accommodate up to 480 total participants.

For our Chicago Region PCA Club Racing license holders, the registration information for the T.R.A.C. 2000 Club Race will be mailed to you in mid-June and your forms can then be returned to the event registrar with a postmark date NO SOONER than July 12th. Club Race forms received with a postmark prior to July 12th WILL NOT BE ACCEPTED in order to give all Club Racers the opportunity to participate.

Due to the popularity of the event, we strongly recommend that anyone wishing to participate in the Drivers' Education portion of the weekend register early. The registrar will be accepting registration forms from Drivers

Education participants exclusively through July 12th. After that date, Drivers' Education registration will open up to any Club Racers who wish to enjoy a longer weekend at Road America following the conclusion of their event of Saturday, September 2nd.

The Drivers' Education event will be divided into four run groups with a maximum of 60 cars per run group. Please note that we will be offering enrollment for up to 25 Novice drivers this year, however all drivers must have some prior track driving experience to qualify for this event.

All cars participating in this event (Club Race and Drivers Education) must not exceed the Road America noise restriction of 108 dB. Please ensure that your car is in compliance with this limit as there are residential areas near the track and Road America personnel will be monitoring our cars throughout the weekend.

Registration confirmation packets will include a copy of the *Rules of Road America*. Please take the time to read them before the start of the weekend to ensure that you the driver, your family, crew, and friends will comply with these rules. These rules are the landlords, not ours. So, please help us comply.

We encourage drivers' education participants to arrive Saturday morning to register and have their cars teched before lunch. By doing this, you will be able to enjoy the four featured PCA Club Races on Saturday afternoon, the post-race festivities at the track, and then display your car at the T.R.A.C. 2000 Concours to be held streetside at Siebkens on Saturday evening.

At 4:00 pm, the streets surrounding Siebkens will be closed off for what is always a great Concours and beginning of the best Party of the season. In addition to the regular five Concours

classes, there will be a special Concours class for race cars. The race cars will arrive at Siebkens in parade with a police escort at approximately 6:00 pm and return to the track in a parade with police escort promptly at 9:00 pm. All participating drivers and volunteer workers will have the Concours Registration Fee waived.

All drivers, family, crew, and friends are encouraged to join us at Siebkens for the T.R.A.C. 2000 Dinner and Party complete with a live entertainment to get everyone in the mood. All registered drivers and volunteers will be the dinner guests of the Chicago Region.

There will be 24-hour security at the track on Friday, Saturday, and Sunday nights. This means those moonlight mechanics can do their final adjustments. As a reminder, the track gates will close promptly at 7:00 pm on Monday evening. With the 24-hour security, Road America will permit participants to camp on the grounds for a fee. Road America also requires a fee for electrical hookups. Also new this year is the availability of rental golf carts at the track for the weekend.

We think you will find this Road America event to be the best track event of the year so please remember to register early to reserve your spot.

See you at Road America!

T.R.A.C. 2000 Co-chairs

Chris Inglot 847.559.1126
e-mail Cinglot@aol.com

Gary Knoblauch 630.325.1086
e-mail GLKMKK@aol.com

Registration

(24-hour info line 847.604.4795)

We need your help to make the **Road America Drivers' Education 2000, September 1st – 4th**, the best it can be. Your help in the past has done just that. Please help out again this year. If you are interested, please send your work assignment preferences, name, address, and phone and/or fax number to:

Scott Lynn
1605 Keim Trail
St. Charles, IL 60174

Fax 630.513.0092
e-mail ChicagoPCA@aol.com
Phone 630.513.0091

Name: _____ Phone: _____
 Address: _____ Fax: _____
 _____ e-mail: _____

Scott, I'd be glad to help out! Sign me up for the area circled below.

Timing / Grid / Start / Tech / Registration / Anywhere you need me

Thursday pm / Friday am / Friday pm / Saturday am / Saturday pm / Sunday am / Sunday pm / Monday am / Monday pm

Places To Stay While Visiting Road America

52 Stafford—An Irish Guest House
 Plymouth, WI—920.893.0552

AmericInn Motel - Plymouth
 Plymouth, WI—920.892.2669

AmericInn Motel/Suites of Sheboygan
 Sheboygan, WI—920.208.8130

Best Western Harborside
 Port Washington, WI—414.284.9461

B.L. Butt Bed & Breakfast
 Plymouth, WI—920.892.8566

Boarding House Bed & Breakfast
 Elkhart Lake, WI—920.876.3616

Breeze Inn to the Chalet Motel
 Mequon, WI—414.241.4510

Brownstone Bed & Breakfast
 Sheboygan, WI—920.451.0644

Comfort Suites—Comfort Dome
 Appleton, WI—920.730.3800

East Shore Inn
 Chilton, WI—920.849.4230

Holiday Inn Express
 Sheboygan, WI—920.451.8700

Holiday Inn - Holidome
 Fond du Lac, WI—920.923.1440

Holiday Inn
 Manitowoc, WI—920.682.6000

Krupp Farm Homestead B&B
 New Holstein, WI—414.782.5421

Lakeland College
 Howards Grove, WI—920.565.1248

Lighthouse Inn on Lake Michigan
 Two Rivers, WI—920.793.4524

Marian College
 Fond du Lac, WI—800.262.7426

Microtel Inn & Suites
 Fond du Lac—920.929.4000

Park Plaza Hotel & Conference Center
 Oshkosh, WI—800.365.4458

The Osthoff
 Elkhart Lake, WI—800.876.3399

Pinehurst Inn
 Sheboygan Falls, WI—920.467.4314

Pioneer Inn & Marina
 Oshkosh, WI—800.683.1980

Plymouth Inn
 Plymouth, WI—920.893.5623

Ramada Plaza Hotel
 Fond du Lac, WI—920.923.3000

Red Forest Bed & Breakfast
 Two Rivers, WI—920.793.1794

Saukville Super 8 Motel
 Saukville, WI—414.284.9399

Sheboygan Super 8 Motel
 Sheboygan, WI—920.458.8080

Siebkens Resort
 Elkhart Lake, WI—920.876.2600

Sippel House
 Elkhart Lake, WI—920.876.3110

Starlite Motel
 New Holstein, WI—920.898.4265

Victorian Village (formerly Barefoot Bay)
 Elkhart Lake, WI—920.876.3323

Village Inn - Motel
 Two Rivers, WI—920.794.8818

Windy Mare
 Kiel, WI—920.894.2284

Wisconsin Aire Motel
 Random Lake, WI—920.994.4501

Yankee Hill Inn Bed & Breakfast
 Plymouth, WI—920.892.2222

Campgrounds

Cedar View Camper Rentals
 Kiel, WI—920.894.7884

Hoef's Resort Campground
 Cascade, WI—920.626.2221

Plymouth Rock Camping Resort
 Plymouth, WI—920.892.4252

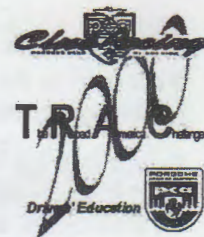
Mark & Dean's Camper Rental
 Kiel, WI—800.894.7181

Westward Ho Camp Resort
 Glenbeulah, WI—920.526.3407



PCA CHICAGO REGION presents TRAC 2000 Drivers' Education
September 3 - 4, 2000

TRAC 2000 Co-chairs Chris Inglot and Gary Knoblauch



<p>First Driver Name _____</p> <p>Address _____</p> <p>City _____ State _____ Zip _____</p> <p>() () ()</p> <p>Eve Phone with AREA CODE _____ Day Phone with AREA CODE _____</p> <p>Fax and/or e-mail address _____</p> <p>PCA Member Yes <input type="checkbox"/> Region _____ No <input type="checkbox"/></p> <p>Current PCA Membership # _____</p> <p>Please circle one: Novice driver Experienced driver Instructor <i>Must be approved by Chief Driving Instructor John Ruther</i></p> <p>Requested Run Group</p> <p><Fastest 1 2 3 4 Slowest></p> <p>Chicago Region (previously assigned) Permanent Car # _____</p> <p>If none, Requested # _____</p> <p>Yes <input type="checkbox"/> No <input type="checkbox"/> Did you receive Skip Barber instruction at a previous PCA Chicago Region Road America event?</p> <p><i>To help us better classify car/driver combinations, please specify your driving experience, including number of track days per year, professional driving schools attended, and tracks driven <u>with typical lap times</u>:</i></p> <p>Any driver new to Road America <u>must</u> list previous track experience with typical lap times.</p> <p>_____</p> <p>_____</p>	<p>Second Driver Name (must be in same car) _____</p> <p>Address _____</p> <p>City _____ State _____ Zip _____</p> <p>() () ()</p> <p>Eve Phone with AREA CODE _____ Day Phone with AREA CODE _____</p> <p>Fax and/or e-mail address _____</p> <p>PCA Member Yes <input type="checkbox"/> Region _____ No <input type="checkbox"/></p> <p>Current PCA Membership # _____</p> <p>Please circle one: Novice driver Experienced driver Instructor</p> <p>Requested Run Group</p> <p><Fastest 1 2 3 4 Slowest></p> <p>Chicago Region (previously assigned) Permanent Car # _____</p> <p>If none, Requested Car # _____</p> <p>Yes <input type="checkbox"/> No <input type="checkbox"/></p> <p>_____</p> <p>_____</p>																
<p>Porsche Model _____ Year _____ # of Cylinders _____ Displacement _____</p> <p>Please list other performance enhancing modifications to help us classify your car: _____</p> <p>_____</p> <p>_____</p>																	
<p>There may be reserved parking spaces set aside for some participants based on size requirements. Please help us by specifying your parking needs for trailers or semis of more than 30'. No other reservations will be honored. For more information please call 847.604.4795.</p> <table border="0" style="width: 100%;"><tr><td style="width: 20%;">Please specify how many:</td><td style="width: 20%;">Semi _____</td><td style="width: 20%;">Dimensions _____ ft x _____ ft</td><td style="width: 20%;">With Group? No Yes</td></tr><tr><td></td><td>Trailer _____</td><td>Dimensions _____ ft x _____ ft</td><td>Group Name _____</td></tr><tr><td>Other (be specific)</td><td>_____</td><td>Dimensions _____ ft x _____ ft</td><td>Contact _____</td></tr><tr><td>Contact e-mail</td><td>_____</td><td>Contact Phone (with Area Code)</td><td>_____</td></tr></table>		Please specify how many:	Semi _____	Dimensions _____ ft x _____ ft	With Group? No Yes		Trailer _____	Dimensions _____ ft x _____ ft	Group Name _____	Other (be specific)	_____	Dimensions _____ ft x _____ ft	Contact _____	Contact e-mail	_____	Contact Phone (with Area Code)	_____
Please specify how many:	Semi _____	Dimensions _____ ft x _____ ft	With Group? No Yes														
	Trailer _____	Dimensions _____ ft x _____ ft	Group Name _____														
Other (be specific)	_____	Dimensions _____ ft x _____ ft	Contact _____														
Contact e-mail	_____	Contact Phone (with Area Code)	_____														

This is a two-page form. Please complete second page.

DRIVER MEDICAL INFORMATION

For second driver, please photocopy, complete, and submit with pre-registration form

This information will be kept confidential, will be utilized ONLY in the event of a medical emergency, and will be destroyed after the event.

Name _____ Age _____ Birth Date _____

List any medication currently used (including eye drops) _____

Contact lenses? Y N Last tetanus shot date _____ Blood type _____

Allergies (including asthma, hay fever, medications or drugs) _____

List any current Medical Conditions _____

Describe any medical changes since your last physical _____

Physician's Name _____ Phone _____

Policies: Your signature below indicates acceptance of these policies.

- The PCA Chicago Region reserves the right to deny registration for or attendance at this event or request the removal from this event of any person as it sees fit.
- Incomplete Registration forms will not be accepted and will be returned with no registration place held. Late fees will apply.
- Road America requires that we exit the track by 7:00 pm Monday September 4, 2000.
- The PCA Chicago Region's policy regarding fees incurred and damage caused at the track is that the party or parties responsible will be required to reimburse Road America for any fees or physical damage caused to the track, its facilities, or its equipment including (but not limited to) the clean up and removal of any spilled oil, coolant, brake fluid, discarded tires, or late exit. These are not covered in your registration fee.
- I agree to indemnify and hold harmless the organizers of this event and their agents with respect to the condition and preparation of my car or any subsequent failure or damage to my car or its occupants as a result of such failures. I acknowledge that at all times I remain solely responsible for the safety and roadworthiness of my car.
- I hereby certify that I will have successfully completed all PCA Club License requirements prior to coming to this event and I have no known physical or mental problems, which might jeopardize others or myself if I participate in this event.
- I give permission to any hospital, medical institution or physician to furnish any information necessary for treatment regarding my condition.

Signature _____ Date _____

In Case of Emergency, Notify _____ Phone/cell phone/pager _____

FEES(Includes 1 Concours Fee & 1 Dinner ticket for Saturday Evening Dinner per fee-paying driver.)

Please circle choices	Postmarked by August 1, 2000	Postmarked <u>after</u> August 1, 2000	
First Driver	\$ 275.00	\$ 300.00	
Second Driver	\$ 125.00	N/A	(family or affiliated PCA member only)
Second Driver	\$ 275.00	\$ 300.00	(non-family/non-affiliated PCA member, non-PCA member)
Extra Dinner Tickets for _____ @ \$ 20.00 per adult			Total (Drivers' fees) \$ _____
_____ @ \$10.00 per child 12 & under			Total (Dinner tickets) \$ _____
Golf Cart _____ @ \$ 250.00 each			Total (Golf Carts) \$ _____
Make checks payable to PCA Chicago Region (No credit cards accepted)			Amount Enclosed \$ _____

\$25.00 PROCESSING FEE FOR ALL CANCELLATIONS (MUST BE IN WRITING)

NO REFUNDS OR CANCELLATIONS AFTER AUGUST 17, 2000

Total enclosed: \$ _____ Make checks payable to PCA Chicago Region

Mail pre-registration form and check to: Mary Anne Nowakowski, Registrar
527 South Rammer Avenue
Arlington Heights, IL 60004

Phone: 847.604.4795 (24 hour info)
e-mail: nowakowskim@permapipe.com

7-Apr-00 Anita's April Adventure Results

Place	Car #	Driver	Navigator	Class	Car	Color	C.P. #1	C.P. #2	C.P. #3	C.P. #4	C.P. #5	C.P. #6	C.P. #7	C.P. #8	Total
1	6	Jack Stephensen	Karen Brown	SOP	911	Red	10	1	37	109	26	15	27	58	283
2	21	Sharif Nijim	Faris Nijim	SOP	964	Black	13	14	123	31	16	45	67	37	346
3	12	Lee Lichtenstein	Chuck Bittman	SOP	968	Blue	18	1	29	70	6	73	119	57	373
4	2	Rod Anthony	Jeff Whiteman	SOP	911	Black	42	93	3	136	71	17	21	76	459
5	20	David O'Bryan	Heather O'Bryan	SOP	911	Black	19	31	2	287	32	3	67	65	506
6	29	Steve Rashbaum	Susan Shire	SOP	Boxster	Black	500	7	68	33	44	21	70	46	789
7	8	Art Kardatzke	Janet Kardatzke	SOP	Boxster	Silver	37	70	9	271	64	126	99	143	819
8	7	Dan Gallagher	Peggy Gallagher	SOP	993	Black	23	66	500	21	84	40	67	57	858
9	17	Ed Barnicle	Gail Barnicle	SOP	993	Black	78	73	134	155	119	65	16	296	936
10	23	Gary Fitch	Dan Fitch	SOP	914	Orange	86	45	72	175	34	25	22	500	959
11	31	Pete Hackenson	Mell Wostaupal	SOP	911	Yellow	103	13	72	77	62	179	73	500	1079
12	22	Jim Jacisin	Cindy Jacisin	SOP	968	Black	69	120	145	500	25	159	190	10	1218
13	14	Ken Pesavento	Nikki Kroll	SOP	911	Black	112	10	11	500	41	253	165	191	1283
14	10	Harold Beach	Bruce Janecek	SOP	993	Black	187	44	220	281	57	145	254	152	1340
15	11	Steve Olson	Sharon Gregor	SOP	944	Champagne	61	33	52	200	53	15	500	500	1414
16	17	Dan Bacin	Linda Bacin	SOP	Audi TT	Blue	132	34	104	500	18	8	148	500	1444
17	16	C. Chumovich	M. Chumovich	SOP	?	?	285	51	500	408	126	94	107	138	1709
18	18	Keith Stawincki	Jen Bynum	SOP	Boxster	White	500	74	93	500	11	276	39	257	1750
19	9	Bill Murrin	Amy Murrin	SOP	911	White	59	25	500	500	60	500	75	152	1871
20	27	Caroline	Allison	SOP	VW Jetta	Green	89	98	500	500	12	159	48	500	1906
21	26	Bob Heider	Barb Heider	SOP	968	White	6	26	131	500	128	500	144	500	1935
22	28	Van Larson	Jim Stokes	SOP	996	Gray	186	75	500	500	78	219	74	387	2019
23	13	Jeannie Steele	Mike Steele	SOP	BMW	White	401	84	243	500	145	155	218	280	2026
24	4	Doug Coup	Heidi Coup	SOP	Pontiac	Grey	367	17	314	500	500	500	2	45	2245
25	24	Gary Kovener	Charlie Pine	SOP	944S	Red	500	85	500	242	67	404	19	434	2251
26	15	Ken Welsch	Renee Welsch	SOP	Boxster	White	86	261	4	500	500	368	184	500	2403
Maximum							500	261	500	500	500	500	500	500	2403
Minimum							6	1	2	21	6	3	2	10	283
Average							153	56	187	308	92	168	108	245	1316

Place	Car #	Driver	Navigator	Class	Car	Color	C.P. #1	C.P. #2	C.P. #3	C.P. #4	C.P. #5	C.P. #6	C.P. #7	C.P. #8	Total
1	1	Mario DelRosso	Sarah DelRosso	TOUR	911C2	Blue	22	11	175	58	400	36	217	121	1040
2	25	Matthew Scott	Stacey Scott	TOUR	Blazer	Blue	98	119	60	205	128	500	75	188	1373
3	19	Randy Looke	Tina Looke	TOUR	911	White	500	64	500	165	48	380	350	293	2300
4	3	Rick Angelica	Gunda Angelica	TOUR	951	Red	500	5	500	43	116	500	380	314	2358
5	32	Randy Newbauer	Connie Newbauer	TOUR	930	Red	48	103	354	500	500	500	177	500	2682
6	5	Mark Markese	Sue Markese	TOUR	944	Red	500	207	500	500	500	500	287	27	3021
7	30	John Nelson	Samantha Nelson	TOUR	944	Red	409	215	500	500	368	500	492	313	3297
Maximum							500	215	500	500	500	500	492	500	3297
Minimum							22	5	60	43	48	36	75	27	1040
Average							297	103	370	282	294	417	283	251	2296

The Mart

The Mart is intended for non-commercial use. Material should be sent to the editor in accordance with the deadline (10th of the month for the following month's issue). Ads are subject to editing (limit 75 words please). Ads are free for Porsche Club of America—Chicago Region members or \$15.00 for non-members. Ads will run for three months and should be re-submitted after this period to be run again. E-mail is highly preferred to eliminate spelling errors (and it makes our lives easier).

The Mart/Chicago Scene
c/o David and Heather O'Bryan
527 North Spring Avenue
La Grange Park, IL 60526
Phone: 708-482-0502
Fax: 708-588-1785
Email: chicagoscene@pca-chicago.org

For Sale Porsche Cars

1988 911 Black/Burgundy full leather, power seats, front/rear spoiler, 16" Fuchs alloy wheels, sun-roof, A/C, alarm, cruise control, hi-end sound (have original Reno), limit slip differential, 93,000 miles (new tires (Dunlop SP 8000) and clutch at 80K), Private Sale, \$20,500 firm, Call Bill at 773-506-2711 or wrodak@iopener.net[JJA]

1955 1600 SPEEDSTER #81105, ENGINE #80106. Black/black. Rare, late 1955 production interim Pre-A car with "A" mechanicals original from the factory. 17,500 miles (believed true but cannot document), owned since 1973, in storage 25 years. Full, no-expense spared restoration completed between 1993 -- 1996. Engine by Steve Schmidt to Super specs, including orig. alloy cyl-

(Continued on page 33)

PEGASUS
not just a source -
a resource.

Pegasus Auto Racing Supplies, Inc.
2475 South 179th Street
New Berlin, WI 53146-2150

1-800-688-6946 order line
1-800-742-0484 fax
1-262-317-1200 tech line
www.pegasusautoracing.com

"Most Complete Catalog"

PEGASUS

Integrated Media Systems

(630) 761 - 1111

Custom Audio/Video System Design and Installation

HOME THEATRE SYSTEMS

DSS SATELLITE SYSTEMS

WHOLE HOUSE AUDIO

NEW CONSTRUCTION PRE-WIRING

SALES

SERVICE

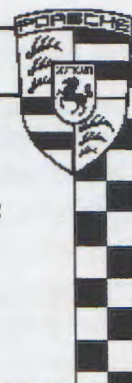
INSTALLATION

ELDRUP AUTOBODY INC.

- Professional Paint and Body Work
- Complete Auto Detailing
- Gyasurjt, Herbert, Stanbox Paints

CALL FOR FREE ESTIMATE

KURT ELDRUP
847.540.9451



**The passion is the same.
The details are different.
The expertise is Fast Tech.**



Updated classic
1974 Porsche Carrera
"They updated everything that needed it and tuned it. Now it goes better than it ever did."



New classic
1998 Porsche Boxster
"Those guys are great. If you have a problem, they know the cause **and** the solution."



Open-air screamer
1999 BMW M-3
"Fast-Tech does all the work on all my cars. They've earned my trust."



1994 Porsche World Cup Champion
"1994 champion. That kinda says everything you need to know about Fast Tech."



Original classic
1975 Porsche 914
"Keeping one of these running well can be a challenge, but not for Fast Tech."



Mildly modified original
1989 Porsche Turbo 911 Cabrio
"Two dealers couldn't solve the problem. Fast Tech took less than one hour!"

Only another car guy would understand. The level of emotion- the *intense feeling* - you have for your car. It's also why you're so obsessed with keeping it running its absolute best. And that's where the trouble lies. A lot of shops out there will tell you they know everything about your car. And, not surprisingly, they'll also tell you that it isn't their fault when they don't get it right in three tries (which you paid for, thank you very much). You quickly learn who knows and who doesn't. And the simple fact of the matter is the guys at FastTech know. Ask anyone who takes their car there. No Kidding. Call and they'll give you a list of references. Because it's not just a car. It's your passion. And it's their's too.

**It doesn't take a genius.
It takes an expert.**

FAST TECH
Automotive Technicians

Fast Tech Motorsports, Inc. 826 Walsh Road, Madison, WI 53714 608-240-0660 Fax 608-240-0662 www.fasttechmotorsports.com

Parts and service - from mild to wild - for Porsche, BMW, Mercedes, Jaguar, Saab, Volvo, Ferrari, Lamborghini, and some of the really weird ones

(Continued from page 31)

inders and HIRTH RB Crankshaft (by Bill Doyle). Complete concours tool kit, jack, and owners & workshop manuals. 1st place and/or peoples choice in every concours entered. Fully sorted, drives perfectly. Details numerous, call for spec sheet & pictures. \$75,000., interesting trades? Rollin Polonitza, Evanston, IL. (312) 408-3130 ext. 214 days, (847) 475-7544 eves till 9pm, fax (312) 408-3136.

1962 356B Karmann Hardtop 201699, Polyantha Red (maroon)/Beige, rare restored car, long PCA concours history 1990-99, Pebble Beach in 1998, history and records, solid throughout, ready to show/drive, stunning! \$27,000, C.C. Ling, 2815 Polo Rd., Bloomington, IL 61704, 309-663-7472. [JJA]

1972 911 PCA GT3 Zero time 3.4-liter twin plug motor; Midwest Euro-sport dyno showed 300 hp. Coil over suspension. 928S4 front and big red rear brakes. Recently freshened turbo gearbox/new sport clutch by Kelly-Moss. 1973 RSR body style and paint. Car weighs approx. 2,200 lbs. Roll cage tied into suspension. NAS-CAR style door bars. (2) sets Forge-Line wheels & (1) set new Hoosiers. \$39,000 or \$34,000 as roller. 18' enclosed Pace trailer available when car sells for \$4,000. John Kramer 312-855-6232 or e-mail:

john.kramer@abnamro.com. [MJJ]

1973 911 Race/Street Blue/White pro built. Fresh, RSR body, 3.8 RS tail. Auto pwr, RSR suspension, coilovers. 285 hp, MFI, turbo pump. Big reds. Tilton duel master/trans pump, Quaife, short gears, fuel safe, Recaros, Momo, BBS, Hoosiers. No accidents. \$35,000. Phil Koepke, 12700 Lakeshore, Mequon WI 53092, 414.243.9012. [JJA]

1970 914-6 Roadster #9140431593 50,000 original miles, same owner 19 years, Orange/Blk. '83 SC 3.0, oil cooler, SC front brakes, chassis stiffener, 7" polished mags. No winters, solid, extras, receipts. \$16,000 firm. FOB Jim Sovik, Naperville, IL 630-904-6222. [JJA]

1988 Ruf 911 Turbo 500+ hp. Rated world's fastest production car. Available at fraction of original cost - best of everything. \$75,000/OBO. Doug Turnbull 608.240.0660. [AMJ]

1975 914-6 Conversion White/black. 2.7. Street/track car. Club Race ready. Call for spec. \$9,000/OBO. Shawn Young (h) 630.941.9336, (pgr) 708.999.9135. [AMJ]

1994 968 Race Car Pristine. Purchased new, disassembled, rebuilt. EFI carbon BBS Recaro. Spares. Thousands below cost. \$75,000. Trades considered. Randy Alexander 608.240.0660. [AMJ]

1988 944 Turbo S Race Car. PCA Class 'E' Silverose, 1 race in log book, Cust.Cage, seat brace, firesystem, race seat, Double adjust.Koni's w/2.5" coil over, adjust. rear Koni's, hollow t-bars, adjust.sw.bars frt. and rr., camber plates, Club sport clutch, cool brake kit, Hot Lap, straight pipe, short shift & much more. Fresh & strong.\$25970. Serious inq.please, specs and pict. avail. Contact Mike Maron (847)774-6677 or mlrecycling@megsinet.net [MJJ]

1980 911SC Weissach Ltd ed, less that 400 made, plat gold color (200 made). Car is legal PCA Club Racing class F with log book but street legal and licensed. Autopower roll bar, Sparco racing seat. RSR front bumper, 3.2 with stock chip, SS headers and Triflow performance exhaust by B&B plus factory sport muffler for quieter street driving. B&B front spoiler cooler, Bilstein sport shocks, new gun drilled torsion bars, Weltmeister Cambermeister, Turbo tie rods, Short shift, 2 sets 16" wheels- BBS with BFG RI's (tires need replacing) and Euromeister Fuchs look-alikes with Yoko street tires. Hot Lap and Auto Meter shift lite included. Fast and Fun plus ALL original parts for easy resoration \$25,000. 1996 Jamar Trailer, elec brakes, tire rack. Includes all tie downs and 10'x20' canopy. Tows above 911 like a dream. \$2100 or

\$26,500 for both. Bill Van Meter 773-637-0402 or

ISTARTEM@AOL.COM [MJJ]

1984 911 Targa Black/Tan Leather, 95k, CD player, PW, Factory AC, Excellent top. Car is very clean and runs great. Always garaged and not driven winters. \$15,000/obo. Steve Maslen 1944 N. Howe St. A, Chicago, IL 60614, 312-397-0259, Smaslen753@aol.com [MJJ]

1960 356 Roadster Vintage Race Car GT6. PCA, SVRA and FIA log books. Three races since complete mechanical rebuild. Rust free steel body with aluminum doors and hoods. Weight 1510 lbs dry. Professionally built, always very reliable and currently in "turn key" condition for 2000 season. Many spares included.US\$32K OBO or trades. For portfolio/pictures/build sheet contact Bruce Farrow 905 509-4940 or farrowbc@aol.com. [AMJ]

1971 911 GT4 Race Car: 935 wide-body 2075lbs. 2.7l 240hp engine by Rennsport Systems. Ported / flowed. Twinplug, 11.5:1 JE pistons, Pauter Rods, PMO Carbs, GE60 cams, dual electromotive ignition, Aeroquip plumbing, full cage with nascar side protection, RSR Coilovers / Springs, Weltmeister swaybars, 9"&10" BBS wheels, 928/930 brake upgrade, fiberglass; hood, bumpers, tail. Lexan windows \$28,000 Doug Coup 847-426-8093 dcoup@dnhmarketing.com [AMJ]

1978 911SC - White /w full Brown Leather. Front/Rear spoilers, PW, PD, Factory AC, Sunroof. 82,000 miles. Always garaged. \$12,000. Contact Steve @773/551-2085 or email mcw_sp@ameritech.net [AMJ]

1998 Carrera S Black Black Interior, Remote CD, Motor Sound Package, 18"Wheels w/Technology Rims. Full Power Seat-left, Wheel Caps with Colored Crest, Porsche Floor Mats-Black, Stainless Steel Ex-

(Continued on page 35)

Agreed value physical damage
insurance for the street and
Driver's Education Events.

Up to 5000 miles annual use.

Minor restrictions apply.

No racing (yet...)

Top rated carrier.

All 50 States.

www.ontrackinsurance.com

The J.D. HECKMAN Company

Spring House, PA 215-540-4435

www.ontrackinsurance.com

John Heckman, PCA member since 1978

Formerly of CHASE & HECKMAN, INC.

(Continued from page 33)

haust, Metal Door Sill Model Insignia.11k

Miles\$ 70,000.00 Mike Ryan 847-884-8949 847-382-6227. [AMJ]
1999 Boxster Arctic Silver metallic/black leather; Sport Touring Package incl on board computer, cruise, remote 6 disc changer; hard top; other options. Excellent throughout. 4,500 miles, \$52,500. Orderes new S. Dennis Kostic, 2508 Swandyke Court, Naperville, IL 60565, 630-357-0843, wimednk@aol.com [AMJ]

86 911 Carrera Coupe--Serial #WPOAB0912GS122433--62K--White with navy blue interior. Bridgestone RE 71's--CD--no spoilers--Pretty, fast, and clean. Full documents. \$22,500.00 Call Bill @ H-708-352-5719--W-708-485-7742--F-708-485-0043, or Bill968@aol.com [MJJ]

1985 944: Race/Drivers Ed/Street, ITS or PCA I, Guards Red-Black leather; 7&8x16 Fuchs, Weltmeister, Koni, Bursch, MSDS, Magna-core, Autopower, Pagid, Simpson, Mobil 1; A/C, Cruise, Rr Wiper, Sunroof all still work. Drive to track and race. Very clean, no damage. \$10,000 OBO. Sidney Franklin Bloomington, IL (309) 829-2028 or SFrank944@aol.com [MJJ]

1959 Porsche 356 A Coupe "Outlaw" style street car-- no bumpers, two Cobra racing seats, Nardi steering wheel. Plexiglass windows. Rough body. New floor pans. No rust. New chrome wheels and Bridgestones. Has 741 (B model) transmission and ' 62 Super engine. Excellent mechanical condition. Fun street car or could possible become vintage racer. Photos available. \$8,500. Jim Knupp 847/729-4865. Call after May 8. Leave message. [MJJ]

1976 911SC #9116600405 Black/

Black Euro 3.0 w/ RSR Bodywork, Recent engine rebuild High Compression 3.2L,Lightened flywheel,Chain Tensioners, Pop-offs, Turbo Tie Rods, New Bilstein Sport Shocks, 21mm and 27mm Torsion Bars, w/ Adjustable Spring Plates, 16" Polished Fuchs Wheels, SSI Headers and Sport Muffler,New Rubber Seals, Carpets and Door Pockets. \$19,500 Mark Lindman (815)985-5858 or mlindman@aol.com for pictures. [MJJ]

1969 911T Tangerine w/Black interior. 2.2 liter engine w/ 40-IDPT/3 Webers. New clutch / Boge shocks / rebuilt alternator / Continental Super CV90's on a set of fuchs. \$ 7,200 Don Benthall Rockford (815) 962-6938 [MJJ]

1989 944 Porsche, 24,900 miles. Guards Red, black leather, garage kept, new tires, original owner, \$15,000, 708-301-0112 John [MJJ]

1999 986 Boxster 12,500 miles, metallic black w/graphite grey and black soft top. Sport touring pkg incl 17" wheels w/P-Zeros, traction control system, 6-disc CD changer, computer, painted rollbar, chrome exhaust tips, aluminum door sills, shift lever and brake handle. Power/memory seats. 5-speed. Still under warranty. \$43,000. Jason Choulachas, Chicago H 773-862-3967 or W 312-803-5690. [MJJ]

911 SC Targa #911821289 Clifford Alarm, Fuchs, Silver w/black int, sheepskin seatcovers. Very good condition \$17,000. John Engstrom, 815-875-4776 or bvvs1td@TheRamp.net [MJJ]

1978 Turbo Targa #9308910011, Guards Red, Black Recaros, 3.3 liter 300 horse. An attention getter! Very fast/very fun. Make an offer for a piece of Porsche History. John Engstrom, 815-875-4776 or bvvs1td@TheRamp.net [MJJ]

1982 928S#WPOJA0927CS822244 Wh/Br lea, 5-spd, sunroof, air, pwr windows/seats, bra, concours condition, cardex, new tires, 46,000 miles, garaged, no winters, \$11,500. John Brandt, Palatine, IL 847-397-7238 [MJJ]

1976 930 White/White 67k many improvements. Free track time at Gingerman Raceway with purchase. \$19,500 616-253-2017 [MJJ]

1989 Targa 911 Silver 75,000 miles. Very good condition, runs tip top. Stage II chip. \$23,000. Call Michael 708-212-3142. [MJJ]

1983 911 Carrera Cabriolet, Grand Prix White, black top, full leather, black interior, 33,000 miles, second owner, Exc. Condition, summers only, garaged winters, non-smoker, factory alarm, AC cruise, PW, Whale tail, Alpine CD, new tires. The Ultimate Summer Toy! \$23,000. Dan Burns, 847-577-8314. [MJJ]

1989 944S2 Baltic Blue Met./Linen Lea. Int. 5 spd., P/W,P/D,cruise,air, sun roof, cd/am/fm, Bra, cover, 56,000 miles,no smoking/track time stored winters, mechanicals/body-very good new timing belt/water pump, one owner, \$15,000.00 obo Bob DeSalvo 630-369-2489 Until 9:00 EST 630-428-4992 Office sierra@elnet.com [JJA]

1995 968 Cab, Red/Blk, Tip, 25K miles, 1 owner all receipts, Excellent Cond.New wheels and tires, Extras; CD changer, K40 front and rear, Nokia 6100hand free, \$33,000/obo. Steve Wagner 708-738-5775. [JJA]
1991 928 S4, Charcoal/Blk, Auto, 60,000 Major service done, excellent Mechanical, minor exterior flaws, New tires, ready to go, great driver, priced to sell at \$19,995/obo...Steve Wagner 708-738-5775. [JJA]

1998 Boxster Arena Red/Sahara Beige Interior. Flawless with 4,300

(Continued on page 36)

(Continued from page 35)

miles. Never in rain or snow. Driven only in "top-down" weather. Sport Package; 17" wheels w/Bridgestone SO2s; CD player; Original Owner of this Spectacular Car. Priced for a quick sale of arguably the best-balanced Porsche ever made. Boxster S on order. \$42,000 OBO. Spring is here...time for top-down motoring. Howard Yefsky, 312/368-4600 (w); 847/821-0438 (h). [JJ] **1963, 356b, Super, Cabriolet.** Red/Black. Same owner for the past 16 years. Calf. car, no rust...ever. Disc brakes, fog lights, headrests, tool kit, 12 volt, chrome wheels, new top. Exceptionally clean. \$36,000. Rod Gustafson, 815-633-1929h, 815-964-9700w [JJA]

1989 Porsche 911 Carrera Guards Red; Black Interior Polished rims; Tinted windows Sony 10 Disc CD changer 47K; Second owner All maintenance done by Fischer Motors Asking \$26,500; Excellent Condition Call Michael Martin Pager/Voicemail: (312) 359-4781 or E-Mail: mchaconas@hotmail.com [JJA]

1991 911 C2 White with tan leather interior. Targa top and tip-tronic trans. 30,000 mi. In near perfect condition no dents, damage, rainy or snowy weather always garage kept and absolutely beautiful. \$36,000 I also have a heavy duty car hauler for rent. large storage box on front of trailer and electric brakes. perfect for trailering your racer to Gingerman or Blackhawk. Roy at 312-977-4487 or e-mail at CKKK1999@aol.com [JJA]

1986 Porche 944, 5spd. silver and black leather. ONLY 57,000 miles! every power option. in VERY GOOD condition. \$6,500.00 qbo. call (847) 931-0436. Forrest Gates. [JJA]

1973 911T (#9113100600) Wine Metallic/Black, excellent condition;

2k miles since complete engine rebuild and enhancement, 80k miles overall. S spoiler, SS brake lines, carrera chain tensioner, turbo tie rods, new clutch, updated electrical, fuel and oil systems. \$14,500. Contact Michael Hedrick 312.750.3766 (days) 847.526.9407 (eves) [JJA] **1999 996 Black,** black partial leather, 18" Tech. Wheels/tires, sunroof, CD 6-spd, 2,500 miles. No rain, sleet, snow. Oil changed 2x's & car zymol'd 3x's—fanatic owner, making room for new toy. Covered and garaged, cover included, garage negotiable. Asking \$63,500. None nicer. Patrick Pilcher, 630-561-6905, 630-510-9996. [JJA]

1973 911 RS s/n 9113600196 M471 factory documented lightweight white/red graphics RSR fenders and bumpers 110 liter racing tank, original motor rebuilt by Roitmayer in Germany to 2.9 specs, short throw air port gearbox 911R hood 9" and 11" Fuchs. A very correct and strong rocket. \$110,000. Haig Haleblan, Crystal Lake 815-455-3112 or haha@core.com [JJA]

WANTED

'93 or '94 NON-sunroof RS America. Please contact Gary Busse at 312/560-9366 (home), 312/332-8646 (work) or via e-mail at gbusse@polysystems.com. [JJA] **1970 911S interior,** exhaust, trunk items—converting from club racer to street. Haig Haleblan, Crystal Lake 815-455-3112 or haha@core.com [JJA]

OTHERS/PARTS

License Plate: For the Porsche enthusiast who wants the "finishing touch" license plate **PORSCH 1** is available to highest bidder. 630-571-2164.[JJA]
Tires/wheels combo.

Street legal, track ready. Will fit most 911 (1990-2000). 4(2-7") Factory "cup" style wheels (not concour but true and straight) shod with bfg comp T/A R-1 (2-205/50 R17) (2-255/40 R17) \$996-now or 964 later. Bruce Janeczek, Post & Rail Farms, Palos Park, IL 60464 Phone: (weekdays) 708/354-1901. (other times) 708/361-8421. [JJA] **1993 C2 Cup Wheels 16"** Porsche Crest Hubs Included, Tires 50% treadlife Excellent condition, asking \$600 OBO + shipping if applicable. Lou Morabito (847) 917-4968 [JJA]

Track Scooter DiBlasi 50 cc two-stroke scooter. Fat tires. Perfect for track--folds up with carrying case. Carry in backseat or trunk. Also street legal (lights, turn signals, can be licensed). \$1,500 Jim Knupp 847/729-4865. Call after May 8. Leave message. [MJJ]

1988 M3 Vin BSAK0302J2195382, White/red, 37,xxxmiles, well cared for Southern car, 5 spd., keyless entry, security, M3 mats, new Bridgestones, no race or smoke, garaged and pampered, \$19,000, 309-663-7472 [MJJ]

HRE Racing Wheels 2 sets: (4) 8.50x16 & (4) 10x17. Used 2 seasons. 50% NEW PRICE. John Bonnett (work) 847.670.8000, (fax) 847.670.8100, e-mail Jbonay@aol.com. [AMJ]

911 Parts: 9" & 10" BBS Wheels w/ Yokohama 008 245/45 & 255/50 \$1500 & extra set of same tires \$250 will fit widebody 911/930 or 944. Weber/PMO flow meter \$60, Facet Fuel pump NEW \$50, Heater Blower \$50, Baby Tornado Mirror Drivers \$15. Off 2.7ltr; engine shroud, sheet metal, crank pully, pully cover, rods, S-pistons, Chain Tower Covers. Black and Tan door pockets, lids, handles and top rails. Lower door trim chrome - early 911, black - late models, off 76 911;

(Continued on page 37)

(Continued from page 36)

glovebox, & cover, emergency brake, interior trim, all glass, manual window regulators, 69-73 911 headlights
New seals: early targa vent window, front fender/body, 76-83 Front & Rear Bumpers complete with Bel-lows., AIR 935-3502 Front bumper with square Headlights for car 911/930 with 9" flares, complete windsheild wiper / washer system.
Bill Shaw 847-426-8093
dnhmktng@aol.com [AMJ]

OEM Turbo Wing and OEM Engine
lid, off of a non-turbo '86 - 911, will fit any 911 74-89. Original Porsche equipment. Guards red and in excellent condition. \$750 OBO. Tony Giannini at 312/795-1523 or a_giannini@hotmail.com [AMJ]
Simpson Voyager Six helmet with fleece bag. Size 7 3/8. Rated SA90. Bought in '96, used 3 events, in perfect condition. \$140 or b/o.
Panorama's from 6/94 - Present,

mint condition, \$20/year. Vinyl Col-gan bra from '89 911, will fit other years, \$30. Donn York. 630-654-6723. dyork@megsinet.net [AMJ]
TOW VEHICLE. 1994 Chevrolet C3500 Silverado. 1 ton dually. 454, auto, 2wd, extended cab, 54,000 miles, cruise, tilt, PW, PL, Power driver seat, bedliner, Am/FM cassette, dual batteries. Set up for fifth wheel or weight distributing hitch. Burgundy/Silver. Excellent condition. Has been stored the past three winters. \$14,995. Honda Spree. Excellent condition. Black. Perfect pit vehicle. Free with purchase of truck. Jack DeBraal, Plymouth, WI 920-892-8317. [AMJ]
Trailex aluminum open trailer, tire rack, surge brakes, winch, weighs only 850 pounds, \$3300. Dudley Wass in Saline, Michigan @ 734-944-4608 or dcwass@aol.com
Racing Dollies - (set of 4) place one of these under each tire and roll

your car where you need it. Were \$300 new, used one season, \$200 OBO. Eric (847) 705-1159.
Misc stuff: Pair of heavy duty metal ramps with 9" lift. No delivery. \$0 (Free). Carrera 2/4 necessary parts ('89-'94) OEM oil & air filters \$2 each. New fuel pump relay \$25. Black alloy lug nuts (20) \$40. Factory shop manual (almost complete) \$100. Factory spec book, pocket size, \$10. Badge bar (fits rear bumper) \$20. 5-point harness (Simpson, black, 3") \$25. Bruce Janecek, Post \$ Rail Farms, Palos Park, IL 60464. Wkdys: 708-354-1901. Other: 708-361-8421 [AMJ]
Tires: 4 Goodyear Eagle NCT 195/65R14 BMW takeoffs, not bald. 2 Pirelli P4000 195/60R15, not bald. \$10 each / all for \$50. Bruce Janecek, Post \$ Rail Farms, Palos Park, IL 60464. Wkdys: 708-354-1901. Other: 708-361-8421 [AMJ]

(Continued on page 38)



PORSCHE COLLISION AND RESTORATION PERFECTION

(847) 382-5285



22073 N. Pepper Road
Barrington, IL 60010
(Across the street from Northstar Motorsports)

"THE PREMIER MEMBERS CHOICE"

(Continued from page 37)

911 Racing parts for '67-'73 911:

rollbar, Recaro touring seat, black cloth, weighs 35 pounds (not fixed back), quick release belts. Package deal, \$350. Other new/used parts such as front brake rotors for 911S cheap, call. Get ready for 2000 motorsport season now. Call "Uncle" Frank, 847-543-1843 even/wknds. [AMJ]

1986 Mercedes Benz 190 2.3-16 valve. Smoke Silver with Black leather. Factory style AMG with 5-speed, fcty headers, ltd slip, BBS with Yokohama performance all season tires. Euro lamps, sunroof. Many new or recent parts replaced, such as chain and tensioner, f and r brakes (pads, rotors, fluid), complete exhaust system w/cat, battery, tie rods, tune-up and alignment. Other stuff like newer deluxe floor mats and top-of-the-line car cover included. Vehicle just turned 95k, very clean, fun to drive. This is an "Uncle" Frank vehicle that needs a good home. Best offer over \$12,000 takes this piece of Benz history. 847-543-1843 home, wknds, eves. [AMJ]

22 ft race trailer for rent. Located in Mundelein IL / Brand new race equipped Wells Fargo available for race weekends. \$250/day or \$600 for 3 day events. Weighs approx 3000 lbs and will haul up to 4000 lbs. Call for available weekends: Leo @ 847-970-9474

993 17" Replicas Porsche center hub caps Front: 17x7.5, 205/50 Bridgestone RE-71 (need replacement) Rear: 17x9, 255/40 Bridgestone RE-71 (80% left) Taken off 87 911 Carrera, will separate components (make offers) \$800 complete plus shipping Kevin Lehmann, ktl@megsinet.net 708-532-6294 [MJJ]

911 Instruments: 72 911T tach

\$25; 911 C2 tach \$350; 911SC tach \$85; 911C2 clock w/all lights \$125; 911 69-73 comb oil press-temp gauge \$75; 911 C2 speedo, shows 10k \$150; RUF 3.2 tach \$450 new; Call Uncle Frank, 847-543-1843 eves/wknds [MJJ]

911 Brake Parts: Wilwood caliper, LH side, like new \$100; 901-352-041-14 rr rotors, 69-83, new \$125 ea; 930-351-047-00, Turbo, 78-80, excellent, LH side front \$160; 911-351-041-20 front vented rotors 69-83, new \$35 ea; used 911-351-041-20 x-drilled or slotted \$10 ea; 914-6 rear rotors, x-drilled or slotted \$25 ea. Call Kelly Wagner, 847-543-1843 eves/wknds [MJJ]

'98 Jeep-Cherokee Classic-17K-4WD-white-auto-ABS-Tubular Running boards and Brush Bar-AC-CD-CC-PL-PW-PS-PB-PM (heated)-Rear WD and wiper-Tilt wheel-\$18,500 Call Bill Murrin 708-485-7742 days or 708-485-7742 eves. [JJA]

Wheels 4 8x16 phone dial type wheels for a 1986 944 turbo in good condition. Best offer. Jeff Edgar 630.926.3728 anytime or jeffreyedgar@msn.com [JJA]
Kinesis K5 wheels (forged 3 piece) for wide body 993/911 (TT, C4S, C2S) and 930 with spacer. Very good condition; used as track wheels for 2 seasons; some scratches but no mounting marks. \$2800 new; offering for \$1900/obo. (two) 8.5x17 w/ Kumho 245/45ZR17 (10% left) mounted (two) 11x17 w/ Kumho 315/35ZR17 (10% left) mounted Old style BFG R1 (30% left) in same size also included. Tony Neczet, 847-304-4808(h) or tonyn@interaccess.com [JJA]

Rims One set of factory 18 inch three piece rims from 94 3.6 turbo. Rims are in excellent condition and come with one set of sumitomo tyres. Tyres have less than 5000 miles on

them. asking 2500 or reasonable offer. Bill Wann 847 872 3317

Bill@meadowsinstrument.com [JJA]
1970 911 racing parts: ATL 15 gal fuel cell \$200, Auto Power Roll cage \$150, TRW 5pt harness \$50, video camera mount \$50, OMP adjustable drivers seat \$150, Corbeau passenger seat \$100, Supertrapps \$200, Purometer \$100, Hot Laps \$100. Haig Haleblan, Crystal Lake 815-455-3112 or haha@core.com [JJA]
911/930/986 Parts: 930 bumpers, exhaust manifold, ring/pinion, air conditioning, clutch, diff., new oil tank, 16" Fuchs, Boxster hardtop, springs, FOB. Nadeen Koepke, Mequon, WI, 414-243-9012. [JJA]
Full set "phone dial" alloys (6" and 7"), in good condition, with P6 Dunlops (185 70 x 15 and 215 60 x 15) - half tread remaining. Any reasonable offer takes part or all. David H. Gill 312 930 5292 days or e-mail at david.h.gill@parsons.com. [JJA]

Dear Porsche Club Members:

Thank you for the beautiful flowers that you sent me. The arrival certainly brightened my day. I am hoping that the 'incident' didn't ruin the party for anyone. Up to that certain point I certainly enjoyed it. Just as a reminder, I do not plan on making this an annual event. Thanks again to one and all.

Lois Beach

THE ♦ EXCHANGE

A DIVISION OF SEMERSKY ENTERPRISES, INC.

Highland Park, IL.

847.432.5020

Fax 847.432.9105



**#1
Porsche
Dealer
In The
Midwest!**

"The Automotive Experience Of A Lifetime!"

Go With A Winner!

- The largest allocation of new Porsches anywhere in the Midwest.
- Huge selection of Pre-Owned Porsches.

*Porsche Factory
Authorized:*

- Sales •Parts
- Service •Leasing

Attention PCA & SCCA Members!

The Porsche Master Technicians at The Exchange are ready to add more performance to your Porsche.

We specialize in:

- Engines •Transmissions
- Suspension •Aero Kits
- Brakes •Safety Harnesses
- Exhaust Systems •Roll Cages
- Custom Fabrication



Awarded a
"1997 Premier Dealer"

Located in downtown Highland Park at 2050 First Street,
1&1/2 blocks North of Central St. Just 20 Minutes from Chicago!

Sales Hours:

Monday - Thursday 9a - 8p
Friday 9a - 6p Saturday 9a - 5p

Service Hours:

Monday - Friday 7a - 6p



Street and Race Prep

PERFECT POWER
844 Liberty Dr.
Libertyville, IL 60048
(847) 367-8837

Responsive Financial Services, Inc.



A Personal Approach to Financial Planning and Investment Advisory Services

- Long-term Financial Planning
- Fee-only Registered Investment Advisor
- Retirement and Estate Planning
- Tax Reduction Planning
- 401(k) Design and Management

John E. Bonnett, President
 Michael R. Sedlak, Advisor/Analyst

3601 Algonquin Road-Suite 620
 Rolling Meadows, IL 60008
 847-670-8000 rfsemail@aol.com (email)
 rfsonline.com (website)

EMMONS COACHWORKS L I M I T E D

Fine Motoring Accessories ®



10% Discount
to PCA Members

We provide the finest quality apparel plus a full
line of car care supplies and motoring accessories.

1-630-832-1411

100 E. ROOSEVELT ROAD • VILLA PARK, IL 60181 • 10 to 6 Mon.-Fri. / 10 to 4 Sat.
<http://www.emmonscoachworks.com>

2000
NEW DIGITAL & OFFSET PRINT SOLUTIONS
FOR THE NEW MILLENNIUM

PRESSTECH
DIGITAL & OFFSET PRINT SOLUTIONS

2000
NEW DIGITAL & OFFSET PRINT SOLUTIONS
FOR THE NEW MILLENNIUM

1 9 9 9

PREMIER PRINT AWARD WINNER

"The Premier Print Award goes to those firms who demonstrate a unique ability to create visual masterpieces. Chosen from thousands of entries, each represents the unique partnership between designer, need and creativity, technology and craft."

Digital Pre-Press and Design

Networked Digital Color

B/W Digital Production

Commercial Printing

Professional Finishing

Laminating

Fulfillment and Mailing Services

Whether you need a full color technical manual, one color brochure or every day stationery, PRESSTECH is your complete one-stop, full service PRINT SOLUTION.

High-Speed Black and White and Full Color Reproduction, Customized Mylar Tabs, Spiral or Double Wire "O" Binding, Perfect Bound, Laminating up to 24" wide. With these solutions our dedicated team members will deliver the personal service needed to ensure all of your project requirements are met and completed within your deadline.

Proud Printer of: Porsche Club of America Chicago Region Scene & Beanie Baby Phenomenon

959 Lee Street Des Plaines, IL 60016 • Tel: 847.824.4485

Fax: 847.824.4775 • e-mail presstech@mc.net

Rallye I Photos:

By Mark Markese



Concours I Results:

Judges choice: Cindy Jacisin
Peoples choice: Jerry Matta

Class A:	1st place	Jim & Patty Jacisin	1990 944S2 Cabrio	302.5 points
	2nd	Andy Discher	1986 951	299.5
Class B:	1st	John Takehara	1987 911	249
	2nd	Sam Collura	1987 911	244
	3rd	Ronald Bean	1986 911	242.5
	4th	Rich Laurie	1995 993	242
	5th	Peter Spentzos	1992 964 Cabrio	237
	6th	Bruce Janecek	1999 996	229
Class C:	1st	Jeffrey Folkerts	1984 944	187.5
	2nd	Paul Becker	1985 911	183
	3rd	Cindy Jacisin	1992 968 Cabrio	178.5
	4th	Kenneth Wilson	1999 986 Roadster	171
Class D:	1st	Harold Beach	1973 911T	153
	2nd	Van Miller	1974 911	146
	3rd	Van Larson	1999 996	136
Class E:	1st	Jerry Matta	1973 911RS	37.5
	2nd	Mark Basso	1987 911	36.5
	3rd	Brent Crossley	1979 930	35.5
	4th	Dee & Jody Relan	1981 911	35
	5th	Bill Micheli	1980 911	34.5
	6th	Harris Jackson	1963 356B	34
	7th	Lee Lichtenstein	1992 968	32
	8th	Andy Szavay	1980 911SC	31.5
Novice:	1st	Scott Musser	1985 911 Cabrio	190.5
	2nd	Jeffrey Price	1974 914	178
	3rd	Art Koenigsberger	1996 911	171
	4th	Carson Greene	1991 964 Turbo	170

Photos by Jody Relan



2000 Board of Directors



President

Dan Gallagher

708-784-0784
Fax: 708-784-0785
Bbabies@aol.com



Vice President

Chuck Bittman

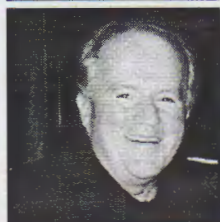
708-352-9505
Fax: 708-354-9505
cbittman@busynet.net



Secretary

Keith Clark

630-690-3381
Fax: 630-690-3394
ClarkFNFlying@aol.com



Treasurer

Ed Barnicle

630-323-2963
Fax: 773-767-0186
Edbarnicl@aol.com



Immediate Past President

Susan Brenkus

630-529-0911
Fax: 630-529-0931
Nbrenkus@aol.com



Director

Jim Jacisin

630-279-4835
James@americanslidechart.com



Director

Chris Inglot

847-559-1126
Fax: 773-286-4811
Cinglot@aol.com



Director

Steve Rashbaum

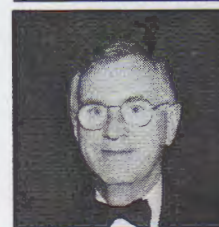
847-673-5218
Fax: 847-673-9355
Srashbaum@lifetech.com



Director

Greg Turek

630-904-0800
Fax:
gregturek@att.net



Director

Pat Yanahan

630-887-7605
Fax: 630-920-1935
e-mail: pyanahan@usachicago.com

2000 Coordinators

ARCHIVE HISTORIAN

John O'Keefe 708-344-0911

AUTOCROSS/GYMKHANA

Jeff Girard 630-985-6739

Keith Clark 630-690-3381

CHARITY

Doug Coup 847-426-0387

CHICAGO SCENE & ADVERTISING

David & Heather O'Bryan 708-482-0502

CONCOURS

Pat Yanahan 630-887-7605

Jim Jacisin 630-279-4835

DATABASE

Deborah Leed 847-382-6911

fax: 847-382-3562

E-mail: Leedlast@hotmail.com

DRIVER'S EDUCATION

Dan Gallagher 708-784-0784

Jeff Girard 630-985-6739

Chris Inglot 847-559-1126

DRIVING INSTRUCTION

Chief Driving Instructor:

John Ruth 847-639-1094

Novices: Ed Leed 847-382-6911

GOODIE STORE

Karen Hackenson 630-655-1629

INSURANCE

Bruce Janeczek 708-361-8421

MEMBERSHIP

Mary Anne Nowakowski 773-769-8193

E-mail: nowakowskim@permapipe.com

PROPERTY

Ed Leed 847-382-6911

RALLYE

Jack Stephensen 708-865-2216

SAFETY CHAIRMAN

Todd Conforti 847-382-9653

SOCIAL

Nikki Kroll 630-469-1546

TECH

Pete Hackenson 630-655-1629

Todd Conforti 847-382-9653

TRAC 2000 RACE

Chris Inglot 847-559-1126

WEBMASTER

Chuck Bittman 708-352-9505

www.pca-chicago.org



48



PORSCHE

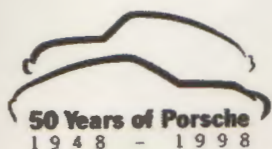
Not just a machine a collection of ideas.

Evolution 911

98



Everything we know so far. 1998 Porsche 911



ED NAPLETON
PORSCHE

745 W. LAKE ST • ELMHURST • 630-941-4300

HOT, FRESH AND...FAST!



AMERICA'S 1ST HEART-HEALTHY PIZZA!

FRANCHISE OPPORTUNITIES AVAILABLE 1 708/655-1982

"Best stuffed spinach in town."

Crain's Chicago Business

"Mouthwatering, to say the least!"

The Boston Globe

"One of the nation's top independents"

Pizza Today

Featured in the New York Times, USA Today, Bon Appetite, ELLE and others.



2204 NORTH LINCOLN AVE. CHICAGO
1504 NORTH NAPER BLVD. NAPERVILLE

75 EAST WACKER DR. CHICAGO
1001 WEST BELMONT AVE. CHICAGO

CHICAGO SCENE
37 LAKEVIEW DRIVE
BARRINGTON, IL 60010-1949

SECOND CLASS
POSTAGE PAID
AT AURORA, IL

DATED MATERIAL

