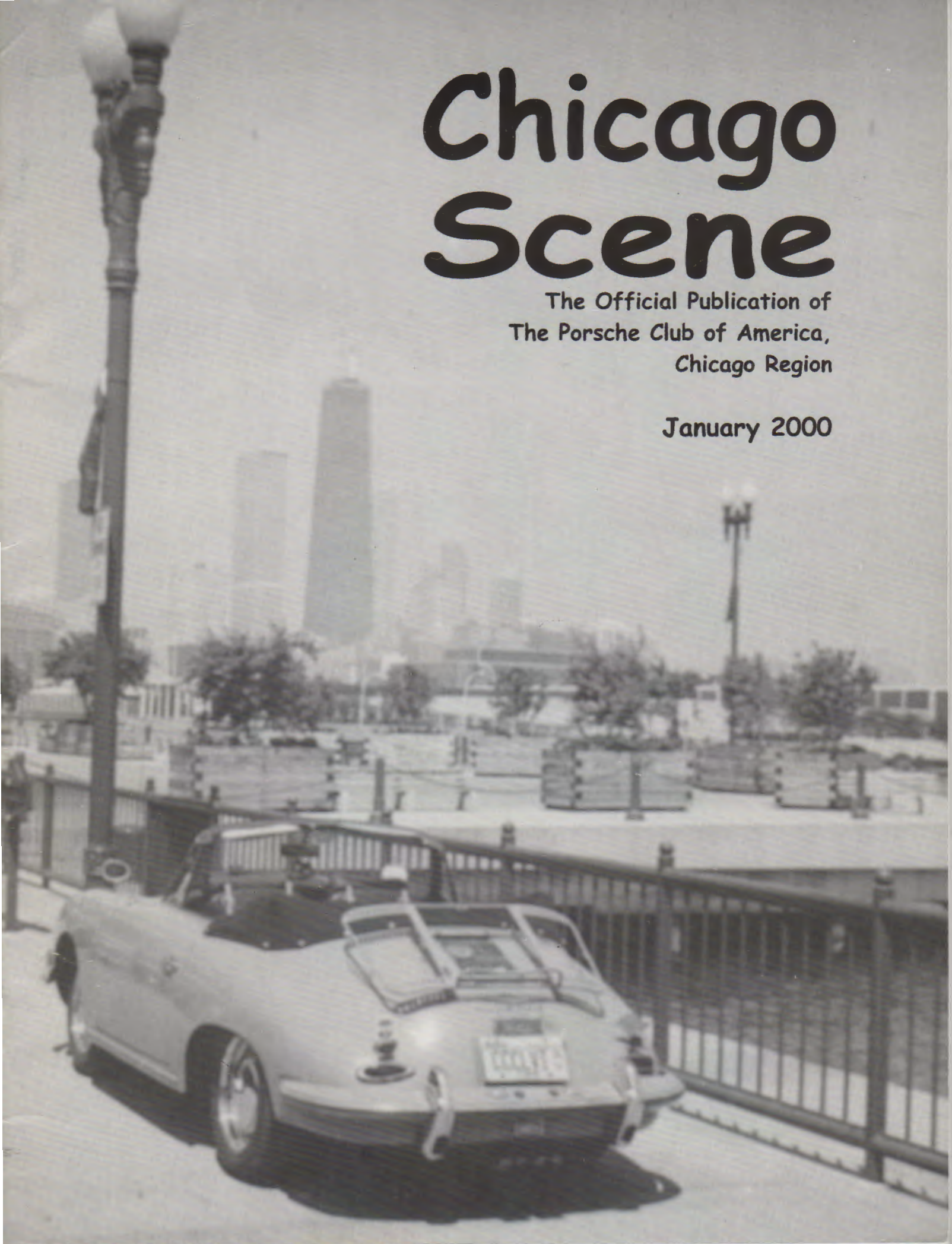


# Chicago Scene

The Official Publication of  
The Porsche Club of America,  
Chicago Region

January 2000





# PERFORMANCE & IMAGE

That's all that  
really matters



We can improve both!  
To order: 800-356-2080

*Northstar*  
Motorsports

Safety Equipment & Accessories

Visit our website at [www.northstarmotorsports.com](http://www.northstarmotorsports.com)

28144 West Industrial Avenue, Suite 108, Barrington, IL 60010 Monday-Friday 9-5 Saturday 9-1



Northstar Motorsports is proud to be a national sponsor of PCA Club Racing



# Chicago Scene

The Official Publication of the Porsche Club of America—Chicago Region

## *Inside this Issue*

Calendar of Events	2
Concours d'elegance 2000	7
Drop Throttle Oversteer	3
Editorial License	24
Rallye 'Round the Region	4
The Mart	16
Board and Coordinators	28
Advertiser Index	24
General Membership Meeting Information	10
Dinner and Bowling Social Event Registration	11

Editors: David and Heather O'Bryan  
527 North Spring Avenue  
La Grange Park, IL 60526  
Phone: 708-482-0502  
Fax: 708-588-1785  
Email: [chicagoscene@pca-chicago.org](mailto:chicagoscene@pca-chicago.org)

**POSTMASTER:**  
Send address changes to:  
**Deborah Leed**  
37 Lakeview Drive  
Barrington, IL 60010-1949

**Cover Photo:**  
Taken at last year's Father's Day  
Concours at Navy Pier.

The *Chicago Scene* is the monthly publication of the Porsche Club of America—Chicago Region, published at PressTech, 959 Lee Street, Des Plaines, IL 60016. Second class postage paid at Aurora, IL USPS 006-381-ISSN 10564195. Subscription is limited to members of the Porsche Club of America—Chicago Region. Porsche Club of America dues are \$36.00 annually, of which \$12.00 is for the subscription. Subscription rate for non-Chicago Region members is \$24.00 per year. Permis-

sion to reprint any material published herein is granted provided full credit is given to *Chicago Scene* and to the author. Porsche Club of America—Chicago Region is not responsible for any services or products advertised herein. Statements appearing in the *Chicago Scene* are those of the author and do not constitute an opinion of the Porsche Club of America—Chicago Region or its board of directors.

**DEADLINE:** Material must be re-

ceived by the 10th of the month for inclusion in the following month's issue and will be published on a space available basis.

**ADVERTISING RATES:** Business card: \$10 per month. Quarter page: \$35 per month. Third page: \$45 per month. Half page: \$55 per month. Three-quarter page: \$75 per month. Page: \$100 per month. Back cover and inside covers: \$110 per month. Please call, write, or e-mail for long term discount rates.



# 2000 Calendar of Events

## January

23 Members meeting Bacino's

## February

5 Social event Daytona

12 Social event Harry Caray's  
House of Blues

## March

12 Chili tasting/

Rallye & Concours schools

18 St. Patrick Social event

26 Tech session

## April

2 Rallye 1

15 Social event

30 Autocross/Drivers school

## May

6 Instructors' workshop

7 Concours 1, Air Classics

18 Blackhawk Drivers Ed.,  
Groups B&C

19 Blackhawk Drivers Ed.,  
Women & Novices

21 Autocross/GYMKHANA 1

26-28 Road America Drivers' Education  
Novices and Instructors

## June

4 Rallye 2

10-11 Gingerman Drivers' Education

18 Concours 2, Navy Pier

25 Autocross/GYMKHANA 2

## July

2-8 Porsche Parade (Sacramento, California)

12 Blackhawk Drivers' Education

open 16 Autocross/GYMKHANA 3 MGA

30 Concours 3 Potters Picnic (Cart Chicago)

## August

5 Golf & Dinner

11 Rockford Under the Lights: Just for fun  
Autocross

13 Rallye 3

16 Blackhawk Drivers' Education

open 20 Autocross/GYMKHANA 4

27 AUTO CROSS ROCKFORD

## September

1-4 Labor Day Weekend, Road America Drivers  
Ed, Club Race, Concours, Dinner Party

13 Blackhawk Drivers' Education

17 Autocross/GYMKHANA 5

23 Gimmick Rallye

## October

1 Concours 5

14-15 Blackhawk Oktoberfest

Drivers' Education

28 Rallye 4

29 Rallye 5

## November

5 Tech session

11 Social event, Wine tasting

## December

9 Dinner Dance

31 Siebkens' New Year's Eve Party.



# Drop Throttle Oversteer

(The faster way around a corner)

Just in case you have not heard, I have been elected president of the Chicago Region of the Porsche Club of America. The election results are published in this issue. Many thanks to all that voted. The amount of ballots cast was a record. With that I inherit the opportunity to write to you each month.

For those of you that do not know me, my name is Bill Murrin, and I have been a member since May of '92. Before being elected president, I was vice president in '98 & '99, director and membership chairman in '96 & '97, and technical chairman in 1995. I have chaired the Utica autocross for the last six years.

I have been selling industrial piping and piping components for 27 years. For the last thirteen years I have been the owner & president of The Allwood Mfg. & Supply Co. Inc.

In the Porsche club I have won the fifth place overall trophy four times in the last five years, missing in '96. However, my wife Amy, my two red headed daughters and I were awarded the Chicago Regions' Family of the Year trophy in 1996. I have had nine different Porsches since '74. The ones that I don't have now are, in order, a '72 914 1.7, a '74 914 1.8, a '88 944S, a '87 911 Targa, a '89 911 C4, a '91 944S2 (now Chris Inglot's), and a '93 968. Way too many Porsches, but always looking for more. We currently own a red '74 914 2.0 that we race and a white '86 911 Carrera coupe that we don't. I have truly enjoyed

each car, air or water-cooled.

I have many hobbies, but the one that would probably interest you the most is my collection of Porsche scale models and toys. My database now lists eight hundred and thirty three cars less the 33 that I have given away. Way too many Porsches, but always looking for more.

Enough of that, on with the business.

In the regions' directory there are 1300 plus households listed. Since most of you have family or affiliate members, the membership in our region is probably 2500 individuals who own or co-own the best production sports cars ever made. What made us buy a Porsche? History, looks, handling, speed, big brakes, durability, and fun behind the wheel come to mind. Whatever it is, we are all like-minded.

The Porsche Club helps you enhance the ownership of your car. I spun my '88 944S into the woods one time, and I was only lucky that I didn't wreck it. By the way, I was going around a damp corner too fast and I dropped the throttle (got off the gas, see title above). I accidentally found the really fastest way around a corner. I joined the PCA that week and signed up for driver's education. The street is not the place to test the limits of your shiny Porsche. Since then I have been taught how to rallye, concours, and autocross by some of the nicest people that I have ever met. So now I know where the apexes are, have much cleaner cars than before, can read road signs better than ever, and also understand the handling characteristics of the cars that I own. All courtesy of the local PCA.

If you really want to know what that car of yours can do, or if you want the cleanest car in your neighborhood, or just want a day of

beautiful country road driving with a mind game attached, come out to one of our events. You will not believe how many beautiful cars you will see. Our main goal is for you to enjoy your car. The friends you make are the added no charge bonus.

I am looking forward to meeting all of you, and I hope that you can come to the Annual General Membership Meeting on January 23rd. Lunch is on the club.

-Bill

P.S. Following are some people that I would like you to get to know. No special reasons other than they are great PCA people. There will be many more in the future.

Larry Petry - Bought his 356 Porsche in the late 50's, just had it restored. He drove it to Road America this summer. It is perfect. Larry is known as the Ag-Guru because he has the largest farm in the Chicago region. Larry also has a silver 911, and lives in Hoopeston, Illinois.

Myra Knoblauch - Did all of those social events over the last two years for the region with a smile. She even drove her Boxster at the Utica autocross. Myra lives in Burr Ridge Illinois with husband Gary and a few more Porsches.

Nick Brenkus - Nick has a pretty blue 911 SC that he autocrosses and races. Nick knows all about tires and setup. He is probably the best autocrosser that I have ever seen. I once saw him in a club race pass six or seven cars on a restart. Later he passed five or six more going down to the inside of a corner. How come? No one else was. Then he won his class - Class G. Nick the G-man. Nick also has a new 996 and lives in Bloomingdale, Illinois with his wife Susan, our fine past president.



# Rallye 'Round the Region

As Rallye Coordinators this year, our aim is to increase enthusiasm for rallyes among our members, encourage all participants to keep trying, and discuss various traps both in the Scene and at a rallye school. We would like to make each rallye a competitive and fun event for everyone.

A rallye is supposed to be fun! So why are some car club members turned off (or disenchanted) after finishing a rallye? Some folks

always want to be first -- don't we all -- but we learn early on that if there are 35 cars, only one can be #1. The rest are also-rans, but everyone has a chance at the TSD rallyes run by PCA/Chicago Region and you should remember "ubung macht den Meister": practice makes the master. The people who win are those who keep on trying!

TSD Rallyes are a test to see if the team (driver and navigator) can duplicate the rallymaster's course over a set distance, given only the average speed, and arrive at the same time the rallymaster did. Competition constitutes following the route exactly with accuracy in mileage and timing. No one except the rallymaster and his pre-checkers know the rallye route, the speeds or the distance involved.

In our monthly comments in

this publication, we will attempt to give information on different segments of a rallye, i.e. THE GENERALS, THE ROUTE INSTRUCTIONS, CHECKPOINTS/CONTROLS, CLASSES, SCORING, RALLYE WORKERS AND LAYING OUT A RALLYE, to name a few. We aim to get everyone so enthusiastic and involved that they would like to be a Rallymaster themselves. By the way, if you are interested in being a Rallymaster or interested in assisting some one in putting on a rallye, we would appreciate hearing from you. We will give you all the help you need and maybe more than you want!

-Tom and Phyllis Harwood

## **BIG REDUCTION in insurance costs** for many high performance cars (See lists below)

### **PREMIUM REDUCTION**

NO LONGER RATED AS HIGH PERFORMANCE

Acura Legend Coupe	Lincoln Mark VII
Audi Quattro	Mazda 323 GT
BMW (all models)	Mazda 626 Turbo
Cadillac Allante	Mazda MX-6
Chevy Beretta GTZ	Mercedes - all models
Chevy Lumina Z34	Merkur XR4Ti
Chrysler LeBaron GTC	Mitsubishi Eclipse
Chrysler TC Turbo	Mitsubishi Mirage Turbo
Dodge Lancer Shelby Z	Olds Cutlass (Quad-4 HO)
Dodge Shadow Turbo	Plymouth RS Sundance
Dodge Spirit R/T	Pontiac Grand AM Quad 4
Eagle Talon	Pontiac Grand Prix Turbo
Ford T-Bird SC	Pontiac Grand Prix Turbo STE
Ford Taurus SHO	Pontiac Sunbird GT
Infiniti Q45	Saab 900
Isuzu Impulse	Toyota Celica Turbo - all types
Jaguar XJS	Volkswagen Corrado



**JAMES CADY AGENCY**  
525 W. Higgins (at Golf)  
Hoffman Estates, IL 60195  
**847.490.1200**

### **STILL RATED HIGH PERFORMANCE**

Acura NSX	Mazda RX-7 Turbo
Buick Grand National GNX	Mazda RX-7 GTUS
Chevy Camaro IROC-Z	Mazda RX-7 GTU
Chevy Camaro IROC-Z Conv.	Mazda RX-7 GXL
Chevy Corvette	Maserati-all models
Chevy Corvette ZR-1	Mitsubishi 3000GT
Chevy Corvette L98 Coupe	Nissan 300ZX
Dodge Stealth RT Turbo	Plymouth Laser RS Turbo
Ferrari-all models	Pontiac Firebird Formula
Ford Mustang 5.0	Pontiac Trans Am GTA
Ford Mustang GT	Porsche-all models
Ford Probe GT	Toyota MR2 Turbo
GMC Sycamore	Toyota MR2 Supercharged
Lotus-all models	Toyota Supra

*Auto, Home, Life, Commercial, Renters, Condo-Owners, Cycles, Boat, Etc...*



### **WEISSACH WERKS**

**EXCELLENCE IN LEISURE  
SPORTSWEAR**

**PROVIDERS OF UNIQUE EMBROIDERY  
AND QUALITY GARMENTS**

PLEASE CONTACT US FOR A FREE CATALOGUE

**TOLL FREE: 1 888 668-4451**

**E-MAIL: WEISSACH@MARS.ARK.COM**

**R. A. Adams**  
**ENTERPRISES, INC.**

**TRAILERS • HITCHES • TRUCK EQUIPMENT**

**RICHARD A. ADAMS, SR.**

**815-385-5970**

Fax 815-385-6684

2600 W. Route 120

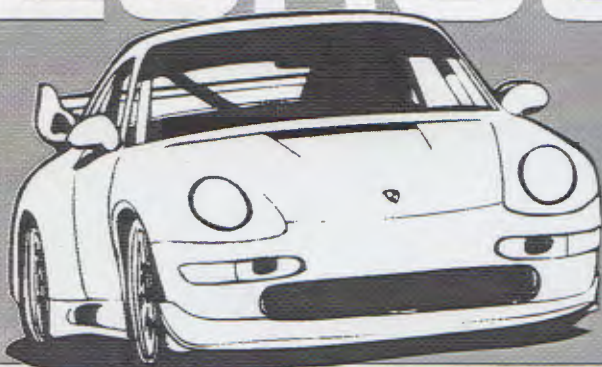
McHenry, IL 60050



midwest

**EUROSPORT**

*Racing*



Spahr Graphics!

**Service & Race Prep**

***Street Car Maintenance***

***Engine Development & Dyno Testing***

***Suspension Tuning / JRZ Shocks***

***Transport And Trackside Support***

***Performance Modifications***

***Recaro Seating / Fikse Wheels***

***Motec Fuel Injection & Data Logging***

***Drack Data Logging***

**MIDWEST EUROSPORT INC  
104 W Irving Pk Rd  
Bensenville, IL. 60106**

**Phone 630-595-5577**

**Fax 630-595-8096**





# Lynch

PORSCHE

Chicago's Exclusive Porsche Source



## Lynch

PORSCHE

---

5259 W. Irving Park Road  
Chicago, Illinois

---

**773-777-2000**





# Concours d'elegance 2000

Concours d'elegance is more than just a car show. It's more than just the care and preservation of your Porsche. It's the camaraderie of driving your car to and event, somewhere you might not have ever been, and spending the day with your family and friends. We all have become somewhat accustomed to seeing Porsches, even the older ones, and a Concours celebrates the fact that these cars, all Porsches, are something very rare. All Porsches are one man's vision of what the perfect sports cars should be.

Before you decide that your car will never be a show car, please understand that most of the cars participating are street or track cars. Our concours school and instructors will show you how to get started and how easy it is after an initial cleaning to maintain your car to concours standards. The Chicago Region is blessed with some of the

finest and most recognized individuals in the country concerning the preparation and care of your Porsche. Be it an everyday street driver, a fully prepared race car, or a show car, Pat Yanahan and John Takehara will show you everything from the basics to bringing your car up to full National Concours d'elegance standards.

In Chicago, we have five classes for presentation. E class is our Exhibition, or no touch, visual inspection only. This class allows anyone in the club with a bucket of water and a sponge to participate. It also allows entrants with rare unrestored cars to come out and compete with cars that spend their lifetime on racing circuits. Class D judges the interior and exterior surfaces of your Porsche. Class C then adds the trunk sections for preparation. Class B adds the engine compartment for inspection and class A then adds the suspension and undercarriage (for the real sickos).

All of our classes judge the cleanliness and condition of your Porsche. Before you begin to wonder how in the world a 1986 911 Cabriolet can compete against a brand new out of the box, never-seen-a-cloudy-day 996, please bear in mind that points

are added for both a car's age and its mileage. These additional points are the great equalizer and allow a 356 to compete against a Boxster.

This year we will display our cars at an air & auto museum. We'll once again go to Chicago's Navy Pier. In August we'll have a traditional family summer picnic. Then we'll go to the streets of Elkhart Lake beside the pure racecars from Road America. Finally, we'll end the year at the Chicago Botanical Gardens in the fall.

Our first event for the new millenium will either be at Air Classics Museum of Aviation, or, if opened in time, their new Vintage Classics Auto Museum facility. Plans are still in the works, but this event will allow us to get up close and personal with some truly outstanding pieces of machinery.

Navy Pier will be our second round. If you missed last year's Father's Day event, you missed out on 60+ Porsches, everything from early 356s to Twin Turbos parked amongst the sculptures on the far lakeside end of Chicago's Navy Pier. Once again we will make this Father's Day event and try better last year's.

*(Continued on page 23)*

## DOUBLE YOUR GARAGE



### WITH CIRCLE AFFILIATED SYSTEMS GARAGE-DOUBLER

Our GARAGE-DOUBLER has an exclusive feature that allows us to stack two cars totalling in height more than the ceiling height. The GARAGE-DOUBLER is self supporting, with no foundation or floor preparation required. Call us for a demonstration. We may have the solution to your car parking and storage problems.

CIRCLE AFFILIATED SYSTEMS, INC.  
"Above and below ground parking systems"  
1205 Sabine Ct., Southlake TX 76092  
1-800-447-7410 / Fax 1-817-421-7622



# PCA Chicago Region Tech Inspection Sheet

NAME: \_\_\_\_\_ CAR COLOR: \_\_\_\_\_ CLASS: \_\_\_\_\_  
 MODEL/YEAR: \_\_\_\_\_ ENG. DISP.: \_\_\_\_\_ PERM. CAR #: \_\_\_\_\_

Pass Fail TO BE INSPECTED BY ENTRANT PRIOR TO EVENT:

- \_\_\_\_\_ 1. **HELMET, SNELL SA 1995 or later required for all track events** including Blackhawk, Road America, and GingerMan (sticker must be attached inside)
- \_\_\_\_\_ 1A. **HELMET, SNELL SA or M 1990 or later required for all autocross or gymkhana events** (sticker must be attached inside).
- \_\_\_\_\_ 2. **APPAREL** - Full-length pants, long sleeved cotton shirts, cotton socks and full coverage shoes are mandatory. Highly recommended, but not mandatory are drivers' suits, driving gloves and shoes all made of Nomex or similar fire-resistant materials
- \_\_\_\_\_ 3. **SEAT BELTS** - Original factory installation; or securely anchored metal-to-metal for both driver and passenger, large diameter washers on both sides of floor mounting holes, swivels have eyes welded closed; five or six point harnesses required for Any Class except Novice at Road America and highly recommended for all events.
- \_\_\_\_\_ 4. **FIRE EXTINGUISHER** - Recommended but not required. Securely anchored metal-to-metal in reach of driver. BC or ABC rated and fully charged. Halon recommended.
- \_\_\_\_\_ 5. **ROLL BAR** - All open cars except 914's, Targas, and cars in the Production class.
- \_\_\_\_\_ 6. **PEDALS** - Free return and in good operating condition. Firm brake pedal.
- \_\_\_\_\_ 7. **LOOSE OBJECTS** - Remove all loose items from trunk and interior, including glove compartment, door pockets, console, etc.
- \_\_\_\_\_ 8. **WINDSHIELD** - No cracks. Functional wipers with good blades.
- \_\_\_\_\_ 9. **MIRRORS** - At least one securely mounted rear view mirror.
- \_\_\_\_\_ 10. **GAS CAP** - Gasket intact and cap tightened.
- \_\_\_\_\_ 11. **BRAKE FLUID** - Level up, must show in reservoir. All cars must have their brake systems flushed with DOT 4 specification or better brake fluid 90 days or less preceding the high speed event. If an other high speed event is run less than 90 days prior to this event, then the fluid must be flushed again before running.
- \_\_\_\_\_ 12. **BATTERY(IES)** - Securely fastened and in good condition; no acid leaks or corrosion. Check fuel lines under battery trays on 914's.
- \_\_\_\_\_ 13. **RUST** - No rust or damage to suspension or chassis parts that affect the integrity of the chassis or brakes.
- \_\_\_\_\_ 14. **FRONT SUSPENSION** - No excessive looseness in steering or suspension. Lower trailing arm to radius tight; axle and shock bolt tight. Ball joints in good condition. Tie rods secure. Axle boots and oil seals in good condition.
- \_\_\_\_\_ 15. **WHEEL BEARINGS** - Correct adjustment, check for proper lubrication, no damaged or burnt bearings.
- \_\_\_\_\_ 16. **BRAKES** - Sufficient brake linings or pads. No cuts or abrasions in brake lines. Check rotor condition. Brake pad thickness will be checked periodically for 2mm minimum thickness throughout the high speed events. Make sure you start with ample brake pad material and/or bring an extra set of pads. It is recommended you start with fresh competition pads properly bedded in.
- \_\_\_\_\_ 17. **REAR SUSPENSION** - Check half shaft bolts and shock bolts. 914's check fuel pump and lines. No positive camber.
- \_\_\_\_\_ 18. **WHEELS** - No cracks. No bends. All lug nuts torqued to 90 - 96 lbs. Valve stem must have airtight cap. Hubcaps removed.
- \_\_\_\_\_ 19. **TIRES** - Good condition. No cracks or bulges. NR or better recommended. Factory recommended tire pressure or better. Minimum tread depth 3/32" on contact patch area (exceptions may be made for race tires or shaved performance tires at the discretion of the event organizers.) Spare removed or secured.
- \_\_\_\_\_ 20. **ENGINE** - Check for odd sounds and satisfactory exhaust. (Remember 108db sound limit at Road America.)
- \_\_\_\_\_ 21. **DRIVE BELTS** - Tight and in good condition.
- \_\_\_\_\_ 22. **LEAKS** - No leaks of any fluid - oil, gas, brake, or coolant.
- \_\_\_\_\_ 23. **THROTTLE RETURN** - Freely operating and good springs. Check both throttle return springs on CIS cars.
- \_\_\_\_\_ 24. **BRAKE LIGHTS** - Functional.

In consideration of my participation in this event, I have checked the above items and certify that they meet or exceed the requirements. I agree to indemnify and hold harmless the organizers of the event, or their agents, with respect to responsibility for the condition and preparation of my car, or any subsequent mechanical failures or resulting damage to my car or its occupants as a result of any such failures. I acknowledge that at all times I remain solely responsible for the safety and road worthiness of my car. I hereby certify that I have no physical or mental problems which could jeopardize myself or others if I participate in this event.

ALL OF THE ITEMS ON THIS TECH SHEET HAVE BEEN TESTED AND SERVICED AS DESCRIBED. THE TECH INSPECTOR'S SIGNATURE BELOW DOES NOT IMPLY COMPLIANCE WITH THE ABOVE AND IS ONLY AS WITNESS TO THE DRIVER'S SIGNATURE WHICH WARRANTS COMPLIANCE.

DRIVER'S SIGNATURE: \_\_\_\_\_ DATE: \_\_\_\_\_

WITNESS TO DRIVER'S SIGNATURE: \_\_\_\_\_ DATE: \_\_\_\_\_

12/99



# THE ♦ EXCHANGE

A DIVISION OF SEMERSKY ENTERPRISES, INC.

*Highland Park, IL.*

847.432.5020

Fax 847.432.9105



**#1  
Porsche  
Dealer  
In The  
Midwest!**

*"The Automotive Experience Of A Lifetime!"*

## *Go With A Winner!*

- The largest allocation of new Porsches anywhere in the Midwest.
- Huge selection of Pre-Owned Porsches.

*Porsche Factory  
Authorized:*

- Sales      • Parts
- Service    • Leasing

## **Attention PCA & SCCA Members!**

The Porsche Master Technicians at The Exchange are ready to add more performance to your Porsche.

We specialize in:

- Engines                      •Transmissions
- Suspension                •Aero Kits
- Brakes                      •Safety Harnesses
- Exhaust Systems    •Roll Cages
- Custom Fabrication



Awarded a  
"1997 Premier Dealer"

Located in downtown Highland Park at 2050 First Street,  
1&1/2 blocks North of Central St. Just 20 Minutes from Chicago!

## **Sales Hours:**

Monday - Thursday 9a - 8p  
Friday 9a - 6p    Saturday 9a - 5p

## **Service Hours:**

Monday - Friday 7a - 6p



**Annual  
General Membership  
Meeting  
Sunday, January 23rd  
Noon—3:00 pm**

All members are invited to come and meet the new Board of Directors, Coordinators, and fellow Porsche nuts. This is a great opportunity for new members to learn more about the various club activities and events, including Autocross/ Gymkhana, Concours, Rallye, Club Racing, Driver's Education, Tech Sessions, and Social events. Hope to see you there.

- Mary Anne Nowakowski, Membership Coordinator

**Bacino's  
1504 North Naper Boulevard  
Naperville, IL**

Corner of Ogden and Naper Blvd.

**Free Lunch  
Cash Bar**



# Dinner and Bowling



Saturday, February 12th

5:00 P.M. Dinner

7:30 P.M. Bowling

Dinner

Harry Caray's

33 W. Kinzie

Chicago, IL

312-828-0966

\$7.00 Valet Parking available

Bowling

AMF Marina City lanes

330 N. State Street

Chicago, IL

312-644-0300

Around the corner from Harry Caray's

Bowling: \$20.00 per person

Equipment rental: \$4.00 per person

**Mail to: Nikki Kroll**

2 South 430 Canterbury

Court Glen Ellyn, IL 60137

630-469-1546

RSVP by Thursday, February 10th!

Please make checks payable to PCA-Chicago Region

Dinner and Bowling # _____	Dinner Only # _____	Bowling only # _____
Names and Phones		
Total Enclosed \$ _____		





# *Fischer Motors, Inc.*

SPECIALISTS IN COMPETITION PERFORMANCE SERVICE

- High Performance Engine Work
- Hunter Wheel Alignment
- Race Suspension Tuning & Weight Balancing
- Transmission & Brake Conversions

Besides all sport related upgrades, we are a repair facility for German cars.

PORSCHE MERCEDES BENZ BMW VOLKSWAGEN AUDI

908 S. Northwest Highway (Rte. 14)  
Between Lake Cook Roads & Dundee Road  
Barrington, Illinois 60010  
(847) 304-8822 - 8823

Weekdays 8 AM - 5 PM

Saturday 8 AM - 1 PM

## **Body Werks of Barrington**

For the Finest in  
**PORSCHE, MERCEDES and BMW**  
Work and Painting

DESI VINCZEN • 126 Cook Street • Barrington, IL  
381-9144



Mac Neil Automotive Products is pleased to —  
offer the finest in quality and performance...

## WeatherTech® Floor Mats

Only WeatherTech® gives you all season protection you can rely on and much more. WeatherTech® Floor Mats...

- Offer truly effective carpet protection.
- Have deeply sculpted channels to trap water, road salt, mud and sand.
- Are made of up to 16 lbs. of pliable virgin rubber.
- Won't curl, crack, or harden, even in sub-zero weather.
- Come in **Black, Tan or Grey** to compliment virtually any interior color.
- Hold up to 1½ quarts of water without spilling.

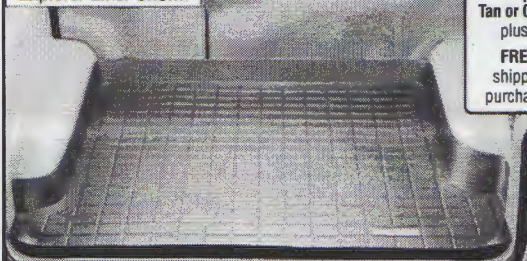
All WeatherTech® Floor Mats come with a protective, non-stick finish which makes cleanup quick and easy.

WE HAVE MATS TO FIT ALMOST ALL DOMESTIC AND IMPORTED AUTOMOBILES, TRUCKS, MINIVANS, AND SPORT UTILITY VEHICLES:

Acura • Alfa Romeo • AM General • Audi • BMW • Buick • Cadillac • Chevrolet • Chrysler • Daihatsu • Dodge • Eagle • Fiat • Ford • Geo • GMC • Honda • Hyundai • Infiniti • Isuzu • Jaguar • Jeep • Kia • Land Rover • Lexus • Lincoln • Mazda • Mercedes • Mercury • Mitsubishi • Nissan • Oldsmobile • Peugeot • Plymouth • Pontiac • Porsche • Renault • Rolls Royce • Saab • Saturn • Sterling • Subaru • Suzuki • Toyota • VW • Volvo

## WeatherTech® Cargo Liners

Explorer Liner Shown



Cargo Liners  
Starting From  
**\$69.95**

Tan or Grey, add \$10.00

plus \$9 shipping

**FREE** cargo liner  
shipping when you  
purchase floor mats\*

And with WeatherTech® Cargo Liners you get even more protection. They are designed...

- To protect the rear cargo area carpeting from all types of wear and tear.
- With a raised lip to help contain spills.
- In **Black, Tan or Grey** to compliment virtually any interior color.

- For either sub-zero winter or hot summer temperatures.
  - To cleanup quick and easy.
  - Not to crack or break as long as you own your vehicle, guaranteed.
- WeatherTech® Cargo Liners are perfect for hauling gardening supplies, fishing gear, construction materials, golf clubs, or the family pet.

Available in **Black, Tan or Grey.**

Visit us Online  
**WeatherTech.com**

### SPORT UTILITY LINER APPLICATIONS:

Blazer • Bravada • Bronco • Cherokee • County • CR-V • Denali • Discovery • Durango • Envoy • Escalade • Excursion • Expedition • Explorer • Grand Cherokee • Grand Vitara • Jimmy • Land Cruiser • LX450 • LX470 • ML320 • ML430 • Montero • Montero Sport • Mountaineer • Navigator • Navajo • Pathfinder • Passport • QX4 • Range Rover 4.0 SE/4.6 HSE • RAV4 • Rodeo • RX300 • Sidekick • SLX • Sportage • Suburban • Tahoe • Tracker • Trooper • Vitara • Wrangler • Yukon • Xterra • 4Runner

### VAN / MINIVAN LINER APPLICATIONS:

Aerostar (Ext.) • Astro (Ext.) • Caravan • Club Wgn/Econoline Wgn • Montana • MPV • Oasis • Odyssey • Previa • Quient • Safari (Ext.) • Silhouette • Sienna • T & C • Trans Sport • Venture • Villager • Voyager • Windstar

### AUTOMOBILE LINER APPLICATIONS:

A4 • A6 • Accord • Altima • Avalon • Beetle • BMW 3, 5, 7 Series • Camry • Civic • CL • Concorde • Continental • Corvette • Crown Victoria • DeVille • ES300 • Eldorado • Escort • Golf/Golf III • GS300 • GS400 • I30 • Integra • Intrepid • Jetta/Jetta III • Legacy Wgn/Legacy Outback Wgn • LS400 • Maxima • Mercedes "C", "E", "S" Class • Passat • S70 • Sable • Seville • SC/SC2 • SL/SL1/SL2 • SW1/SW2 • Taurus • Town Car • V70 • V90 • Vision • 740/760/940/960 • 850 • 944

(TAN AND GREY CARGO LINERS AVAILABLE FOR SELECT APPLICATIONS)

## WeatherTech® WeatherFlector™

Introducing our WeatherTech® WeatherFlector™ precision crafted in Germany, exclusively for Mac Neil Automotive Products.

- Maximizes your fresh air enjoyment
- Optically transparent
- Sleek-aerodynamic OEM styling and quality
- Reduces wind noise
- Installs quickly and easily inside the window channel using a precision-machined, micro-thin mounting flange
- No unsightly exterior tape
- Minimizes interior heat when parked

And with the WeatherTech® WeatherFlector™ being TÜV approved, it is clearly your finest choice!

WE HAVE WEATHERFLECTORS TO FIT ALMOST ALL DOMESTIC AND IMPORTED AUTOMOBILES, LIGHT TRUCKS, MINIVANS, AND SPORT UTILITY VEHICLES:

Acura • Audi • BMW • Buick • Cadillac • Chevrolet • Chrysler • Daihatsu • Dodge • Eagle • Ford • Geo • GMC • Honda • Hyundai • Infiniti • Isuzu • Jeep • Kia • Land Rover • Lexus • Lincoln • Mazda • Mercedes • Mercury • Mitsubishi • Nissan • Oldsmobile • Plymouth • Pontiac • Saab • Saturn • Suzuki • Toyota • VW • Volvo

We also carry products from these fine companies, see them on our website at [www.weathertech.com](http://www.weathertech.com):



\*We pay regular shipping within the 48 contiguous states, when shipped to the same address on additional sets of floor mats or a cargo liner when purchased in combination with a set of front floor mats; or additional sets of WeatherFlectors™ when purchased in combination with a set of front WeatherFlectors™. WE GUARANTEE YOUR SATISFACTION. If you are not satisfied with your order, return your unused product within 30 days for a complete refund, less shipping & packaging.

Photography by: Richard Izui, Chicago

Available in **Black, Tan or Grey.**



Front Floor  
Mat Set  
**\$44.95**  
Tan or Grey,  
add \$5.00  
plus \$8 shipping  
2nd set ships **FREE**\*

Front & Rear  
Mat Set  
**\$79.95**  
Tan or Grey,  
add \$10.00  
plus \$8 shipping  
Rear set ships **FREE**\*

Grand Caravan Floor Mats Shown

New... CenterLoc™ Floor Mats Available for Most Popular Minivans!

**MacNeil**  
AUTOMOTIVE  
PRODUCTS LIMITED

2435 Wisconsin Street  
Downers Grove, IL 60515  
630-769-1500 fax 630-769-0300  
1-800-441-6287

**ORDER TODAY:**  
**1 (800) 441-6287**

Representatives are available:  
Monday through Friday — 7 AM - 11 PM  
Saturday — 8 AM - 11 PM  
Sunday — 8 AM - 10 PM (Central Time)

Canadian Customers Call:  
1 (800) 378-6287

Major credit cards accepted.  
We normally ship within 48 hours.  
Express shipping available.

WeatherFlector™  
Front Set  
**\$44.95**  
plus \$8 shipping  
2nd set ships **FREE**\*

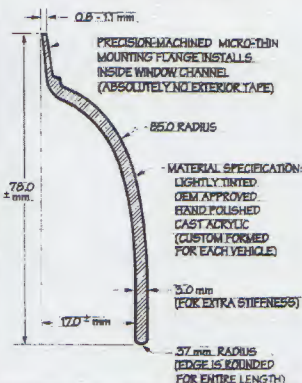
WeatherFlector™  
Front & Rear Set  
**\$79.95**  
plus \$8 shipping  
Rear set ships **FREE**\*



Tahoe WeatherFlector™ Shown

**No Exterior  
Tape Needed!**

### THE SECRET





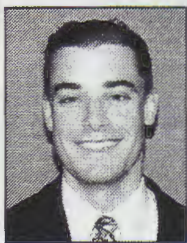
# Nives Rizza Porsche

The fastest growing Porsche dealer in the USA.

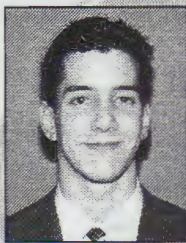
BOXSTERS • 911s • CARRERAS • TURBOS • TARGAS

- Great Selection & Prices
- Large Pre-Driven Porsche Inventory
- Huge State-of-the-Art Service Department
- Giant Porsche Parts Inventory
- Factory Trained & Certified Technicians
- Free Service Loaner

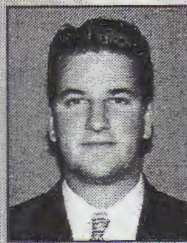
## Professional Porsche Consultants



Aaron Zielinski  
Porsche Sales Mgr.



Anthony Rizza  
Porsche Sales



Mark Berry  
Porsche Sales



Jamie Littrel  
Porsche Sales



George Serritella  
Porsche Sales



Bob Galen  
Porsche Service

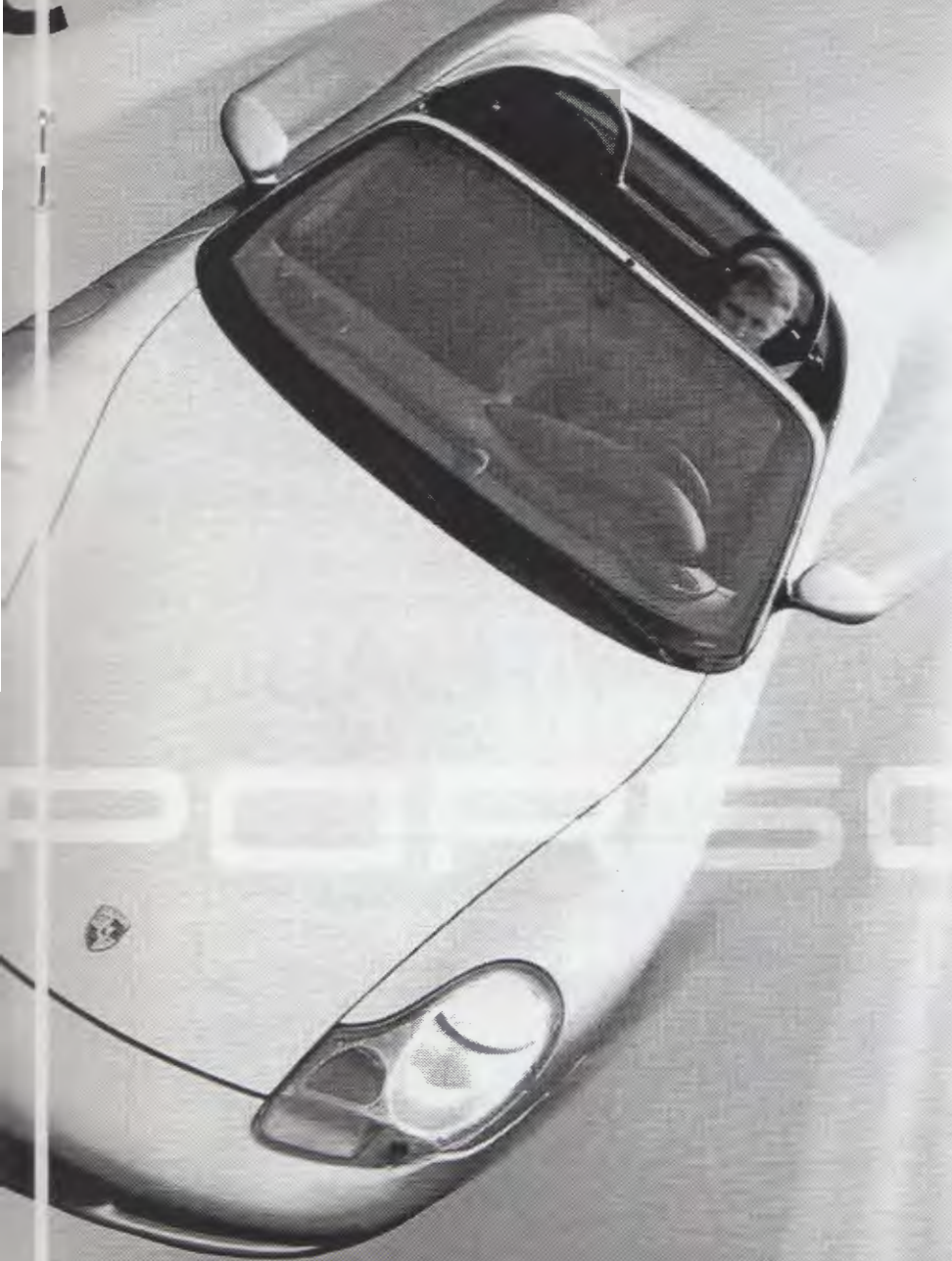


# NIVES RIZ

# PORSCHE



Now  
In Stock...  
2000 Boxster "S"



**RIZZA**

159th Street & 80th Avenue  
ORLAND PARK  
708 403-0300

[www.rizzacars.com](http://www.rizzacars.com)

SHOWROOM HOURS: Daily 9-9:30 & Saturday 9-7:30



# The Mart

The Mart is intended for non-commercial products. Material should be sent to the editor in accordance with the deadline. Ads are subject to editing (limit 75 words). Ads are free for Porsche Club of America—Chicago Region members or \$15.00 for non-members. Ads will run for three months and should be re-submitted after this period to be run again.

The Mart/Chicago Scene  
527 North Spring Avenue  
La Grange Park, IL 60526

Phone: 708-482-0502  
Fax: 708-588-1785 (after Jan. 9th)  
Email: [chicagoscene@pca-chicago.org](mailto:chicagoscene@pca-chicago.org)

## For Sale Porsche Cars

**1972 911 PCA GT3** Zero time 3.4-liter twin plug motor; Midwest Euro-sport dyno showed 300 hp. Coil over suspension. 92854 front and big red rear brakes. Recently freshened turbo gearbox/new sport clutch by Kelly-Moss. 1973 RSR body style and paint. Car weighs approx. 2,200 lbs. Roll cage tied into suspension. NAS-CAR style door bars. (2) sets Forge-Line wheels & (1) set new Hoosiers. Great for drivers' ed/vintage racing/starter car for GT class PCA racing. 1:18 at Putnam, 1:44 at Mid-Ohio, 1:43 at Road Atlanta this year. \$48,000 or \$52,000 with 18' enclosed Pace trailer. John Kramer 312.855.6232 or e-mail:

[john.kramer@abnamro.com](mailto:john.kramer@abnamro.com).

**1973 911 Race/Street** Blue/white. Professionally built. Fresh RSR body, 3.8 RS wing. Auto pwr, RSR suspension, coilovers. 285 hp, MFI, turbo pump. Big reds. Tilton duel master, Quaife, Tilton pump, short gears. Fuel safe. Recaros. Momo, BBS. Best Offer. Phil Koepke, 12700 Lakeshore, Mequon WI 53092, 414.243.9012.

**1984 911 Carrera** Quartz metallic. 63K mi. 60K service complete. Fuchs 16" alloys w/locks. Blaupunkt Mesa cassette stereo. Cruise control. Af-

(Continued on page 18)

Handling problems?



**PEGASUS**  
Auto Racing Supplies

**The ultimate  
pocket guide!  
Perfect for any  
kind of racer.  
Part No. 5311  
Only \$14.99**

2475 South 179th Street  
New Berlin, WI 53146-2150  
[www.execpc.com/~pegasus/](http://www.execpc.com/~pegasus/)

e-mail: [pegasus@execpc.com](mailto:pegasus@execpc.com)  
1-800-688-6946-order line  
1-800-742-0484-fax  
1-262-317-1200-tech line  
"Most Complete Catalog"

Area Code change effective  
September 25, 1999  
Mark Your Calendar

The answer.



## Integrated Media Systems

(630) 236 - 7700

*Custom Audio/Video System Design and Installation*

HOME THEATRE SYSTEMS

DSS SATELLITE SYSTEMS

WHOLE HOUSE AUDIO

NEW CONSTRUCTION PRE-WIRING

SALES

SERVICE

INSTALLATION

## ELDRUP AUTOBODY INC.

- Professional Paint and Body Work
- Complete Auto Detailing
- Gysurjt, Herbert, Stanbox Paints

CALL FOR FREE ESTIMATE

**KURT ELDRUP • 847.540.9451**

(Personalized Works)





"PARTS AND SERVICES FROM PEOPLE WITH EXPERIENCE,  
INTEGRITY AND A PASSION FOR PERFECTION."

References?  
Ask our customers,  
and soon  
you will become one too!!

## QUALITY-SERVICES-PRICE

- FACTORY AND AFTERMARKET PARTS AND ACCESSORIES
- TRANSMISSIONS ■ ENGINES ■ FIRE SAFETY SYSTEMS
- SUSPENSIONS AND BRAKES ■ ELECTRONIC IGNITION AND WIRING
- FUEL SYSTEMS ■ SAFETY CAGES ■ WHEELS AND TIRE PACKAGES
- ARRIVE AND DRIVE PACKAGES ■ PROFESSIONAL DRIVER TUTORING



826 WALSH ROAD MADISON WI 53715  
(608) 240-0660 FAX (608) 240-0062

[www.fasttechmotorsports.com](http://www.fasttechmotorsports.com)



(Continued from page 16)

ter market hear exchanger & exhaust (passed '98 emissions test). Recent Dunlop tires. Runs/drives beautifully. \$20,750. Stephen Yates 847.548.1554.

**1985 911 Carrera Targa** Red/black. 90K mi. Champagne Fuchs. Factory spoiler. Kenwood w/6 CD changer, also have orig. Blaupunkt. Bra/fitted cover. Mobil 1 only. Major (90K) service/all new brakes recently done. All service record/4 previous owners. Excellent in and out. \$19,000/OBO. Mark (eve) 630.455.0013 or e-mail: [mfp813@aol.com](mailto:mfp813@aol.com).

**1986 911 Targa Carrera** White/blue interior. 34K mi. A/C. Pwr. seats/cruise. No winters/accidents/rain. Completely orig. Mint condition. #WPOEB

O916GS160622. \$24,900.

815.886.2891 or e-mail:

[cparsons@westerncom.net](mailto:cparsons@westerncom.net).

**1987 911 Carrera Coupe** Blue w/ black interior. 52K mi. Frt./rr. spoilers. Sport seats. Garaged. \$18,500. Tom Corlett 847.669.8799 or e-mail: [delphi@techinter.com](mailto:delphi@techinter.com).

**1988 Ruf 911 Turbo** 500+ hp. Rated world's fastest production car. Available at fraction of original cost - best of everything. \$75,000/OBO. Doug Turnbull 608.240.0660.

**1989 911 Speedster Widebody** Red/black top/tan leather. 9K mi. Very rare/sharp. Flawless condition. A/C. Pwr. Seats. CD. Limited slip. Cruise. Short shift/more. Impeccably taken care of. \$52,500. Mike Martin 414.427.8865.

**1975 914-6 Conversion** White/black.

(Continued on page 20)

## Responsive Financial Services, Inc.



### A Personal Approach to Financial Planning and Investment Advisory Services

- Long-term Financial Planning
- Fee-only Registered Investment Advisor
- Retirement and Estate Planning
- Tax Reduction Planning
- 401(k) Design and Management

John E. Bonnett, President

Michael R. Sedlak, Advisor/Analyst

3601 Algonquin Road-Suite 620

Rolling Meadows, IL 60008

847-670-8000 [rfsemail@aol.com](mailto:rfsemail@aol.com) (email)

[rfsonline.com](http://rfsonline.com) (website)

[mikspahr@gateway.net](mailto:mikspahr@gateway.net)

Custom Design Helmets Race Car Graphics



Michael J. Spahr

CREATIVE VINYL GRAPHIC DESIGN

# Spahr Graphics!

842 Leyden Lane Wilmette, IL 60091 (847) 251-7664 Fax 7691





## ***IT'S BACK!***

---

### **O.N T.RACK C.OVERAGE**

---

We asked you to stayed tuned, you did, and now ***IT'S BACK!***

#### **Coverage for Drivers' Education Events!**

It took us thirteen months of hard work, and just in time for Track Season we are pleased to announce a new agreement with a major U.S. insurer to provide the insurance.

Thanks for your patience!

Do you like to drive your collector car? Do you have it insured through one of the collector vehicle, select auto, or specialty car policies on the market today but dislike the restrictions they place on it's use? "Whadya mean I can't drive my Porsche to work once in a while?!" ***IT'S BACK!*** No drivers under age 21. No racing. (Drivers' Education is not racing.) **No other restrictions.**

Have you attempted applying for one of those other policies but were turned off by all the paperwork? "What am I, a circus animal jumping through all these hoops?"

***IT'S BACK!*** Simple, **one** page application.

We've got what you need: a limited mileage (2500 or 5000 miles annually), high liability, agreed value, sensible deductible, full coverage automobile insurance policy including

#### **Coverage for Drivers' Education Events!**

Pricing is back where it used to be, too. A little more than those other guys, but about half of what the regular market charges. Phone us today for a quote. You'll be glad you did!

## ***IT'S BACK!***

---

**CHASE & HECKMAN, INC.**

**I N S U R A N C E**

P.O. BOX 489, FLOURTOWN, PA 19031-0489

Phone (215) 248-4445 / 836-1274 FAX 233-2780 CHSNDHCKMN@aol.com



(Continued from page 18)

2.7. Street/track car. Club Race ready. Call for spec. \$9,000/OBO. Shawn Young (h) 630.941.9336, (pager) 708.999.9135.

1987 924S Black/black. 31K mi. 5 spd. #WPOAA092XHN451442. All records. Comp. Orig. Cardex. No winters. Absolutely mint/needs nothing. Class winner '99 Porsche Parade. \$10,500 firm. John Diwik (h) 630.904.9915, (cell) 630.327.9147. 1988 924S Coupe Dark blue/beige. 5 spd. WPOAA0927JN450786. Borla exhaust. Recent brakes with s.s. lines. New DieHard battery. 2<sup>nd</sup> owner/receipts for major work performed. 968 Cab. Purchase forces sale. \$4,800. Hank Estrada, 5415 N. Sheridan Rd., Chicago, IL 60640, 773.271.7430, e-mail:

[hankestrada@hotmail.com](mailto:hankestrada@hotmail.com).

1986½ 928S Metallic silver/black leather. 76K mi. Gorgeous. All options available. Sony Gold ES CD/amplifier and sub woofer. Bra. Newer BF Goodrich Z rated. Recent 75K tune up done. Reg. Oil changes. No winters/little rain/garage kept.

Great car! \$16,5000/OBO. Gary 708.267.8636. Addison, IL.

[Geg13@msn.com](mailto:Geg13@msn.com).

1977 930 Turbo Red/black leather. 78K mi. Euro spec. #9307700093. 4 spd./sun roof/factory intercooler. 930S front spoiler, turbo tail. Carrera chain tensioners. 16" Fuchs wheels. Big brakes. AM/FM cassette. Pwr. Windows/mirrors. A/C. Good running/driving cond. \$17,500. Dan Tinley (w) 708.542.7883, (h) 847.259.1254.

1984 DP935 Turbo Stage II Euro composite body. Red/black leather. 400+ Hp. 11K mi. Cockpit adj. boost. 9x15, 13x15 Fuchs. New P-7's. A real DP with all the DP features. Rare and wild! Will trade for 1996 Viper GTS or \$46,000. Erik 847.223.0217.

1986 944 Turbo Guards red/gray leather. Cardex factory options, central locking system, side moldings. Cruise, alarm, sunroof, Monterey radio. Maintenance records. Extras include factory mats, bras, & Revolution 3 cover. Non-smoker/garaged. '98 & '99 Chicago Region class winner. \$13,500. Andy Discher, 727 S. Cal-

houn Ave., Aurora, IL 60505. Leave message @ 630.898.2681.

1986 944 Turbo White/champagne leather. 64K mi. Rear light kit, phone dial wheels. Needs nothing. Looks/runs like new. \$8,000/OBO. Ed Raymond 847.884.1070, e-mail: [eraymond@d211.org](mailto:eraymond@d211.org).

1987 944 Red/black full leather. Detailed service records. Exc. cond. \$7,500. Mike (eve) 309.441.6108 or e-mail: [miketeri@geneseo.net](mailto:miketeri@geneseo.net).

1988 944 Turbo S Race Car Class E. 1 race in log book. Race ready. Full set up. Fast & strong. Ask for details. \$25,975. Mike Maron 847.774.6677 or e-mail: [mirecycling@megsinet.net](mailto:mirecycling@megsinet.net)

1989 944S2 Coupe Red/black leather. 76K mi. Momo steering wheel, new water pump & timing belt. All other mechanicals, interior, & exterior in good condition. Y2K compatible. \$12,900. Carl Mahrenholz (days) 312.664.9178 ext 213, (eve) 847.705.0329.

1994 968 Race Car Pristine. Purchased new, disassembled, rebuilt.

(Continued on page 21)



## PORSCHE COLLISION AND RESTORATION PERFECTION

(847) 382-5285



22073 N. Pepper Road  
Barrington, IL 60010

(Across the street from Northstar Motorsports)

"THE PREMIER MEMBERS CHOICE"





(Continued from page 20)

EFI carbon BBS Recaro. Spares. Thousands below cost. \$75,000. Trades considered. Randy Alexander 608.240.0660.

**1997 Twin Turbo Arctic Silver.** 16K mi. Supple classic gray alum. Shift/brake handles. Stainless rockers. Chrome exhaust tips. CD changer. Many leather options. Heated seat/driver's lumbar/crests on seats. Painted crests on wheels. \$105,000/OBO. Scott Morrison (w) 414.798.0600, (h) 414.646.7473.

**1997 993C2S Arena red/black.** Tip-tronic. 18" sport classic wheels. Motor sound. Eclipse CD w/ HiFi, 10 speaker sound package. Power seats. 10K service. As new. \$62,500. Private sale. Mike 847.359.5559.

**1999 Carrera Coupe Silver/gray PS.** Traction control. Premium sound system. Lumbar seats and more. \$73,000. Dennis Dicks 312.236.0571.

**911 Racecar** Want to go PCA racing? -911 racecar for sale

-Super lightweight composite RSR body

-Full custom roll cage with NASCAR

bars

-3.6 Turbo brakes

-Fikse wheels

-Fabcar dual cockpit adj. Brake masters

-Full race coil-over susp. & sway bars

-Recaro seat

-Lightweight composite dash

-G50 transmission

-Sport clutch

-GT4 2.7 or 3.2 race engine

-All new

Call Brian for more details. Midwest Eurosport, 630-595-5577

## OTHERS/PARTS

**1984 Mercedes 380 SL** Dark blue/tan. 95K mi. Two tops. Garaged all year. Serviced by Fischer Motors. Exc. cond. \$13,500. David Dunaway (days) 773.714.2439, (eve) 847.304.0737.

**1976 Triumph TR6** White/black top & leather. 42K mi. Very sharp. Flawless condition. Impeccably taken care of. Mike Martin 414.427.8865.

**1996 Haulmark 24ft Enclosed Trailer** Dark blue/checker floor/

white side walls. 20 ft awning. 110v & 12v lighting. Tire rack. Halogen lights. In-floor spare storage. Upper cabinets, many tie-downs. Frt. Diamond stone guard, alum. Mag wheels. Ceiling vents. 30 amp power connection. Several 110 outlets. E-track on wall. Over 10K new. \$7,900. Scott Morrison (w) 414.798.0600, (h) 414.646.7473.

**HRE Racing Wheels 2 sets:** (4) 8.50x16 & (4) 10x17. Used 2 seasons. 50% NEW PRICE. John Bonnett (work) 847.670.8000, (fax) 847.670.8100, e-mail

[Jbonay@aol.com](mailto:Jbonay@aol.com).

**2.8 RSR Engine (4S Class)** 15 hours since complete rebuild: 2:32.6 at Elkhart. Fuel Injection system (complete) + headers available, or will separate. \$25,000 invested. SAVE \$10,000. John E. Bonnett (work) 847.670.8000, (fax) 847.-670.8100, e-mail [Jbonay@aol.com](mailto:Jbonay@aol.com).

**'86 Carrera Parts** (2) 6x16 Fuchs w/ Bridgestone RE-71 (50% or better left). (2) 7x16 Fuchs w/Bridgestone RE-71 (New Aug. '99). Frt \$400, rr

(Continued on page 22)



## Street and Race Prep

**PERFECT POWER**  
844 Liberty Dr.  
Libertyville, IL 60048  
(847) 367-8837



(Continued from page 21)

\$600 or \$900 for set. Wheel center caps for Fuchs w/crest \$100 for set. Pat McCrystal (w) 815.385.9233, (h) 815.728.1593.

**911/Racing Parts** Slide valve injection system by Bob Farmer for 2.7 litre race motor, inc. carburetors, induction manifold and air cleaners (makes serious horsepower), \$3,500. Firm. 2.7 litre race cylinder heads, extensively modified by Bob Farmers, flow rates available, \$3,000. (1) pair Recaro seats from European 911 Turbo, black cloth/awesome plaid inserts, exc. cond. (fore aft recline, front angle & leg extensions adjustable, can be made into awesome office chairs), \$1,000. For 993 bodied cars only 3.8 RD decklid w/carbon fiber wing & high wing extenders with gurney flap, painted white (minor cosmetic fiberglass, easily repaired, damage), \$750 firm. Will sell extenders (raises standard wing just below roofline into clean air) separately for \$175. Digital photos for serious inquiries only. Buyer pays

shipping on all parts. Joseph T. Semionetta, 514 Meadow Rd., Winnetka, IL 60093. (days) 312.444.3922, e-mail: [PCANUT@home.com](mailto:PCANUT@home.com).

**Rotors (4)** OEM Porsche rotors. Less than 30% used. Fits C\$ '89 - '94, C2 '92 - '94, RS America '93 - '94. Orig. cost \$125 each. Will sell for \$35 each. I'll pay freight. Jeremy Goldberger 847.778.1887 or e-mail: [Jgoldberger@mindscape.com](mailto:Jgoldberger@mindscape.com).

**944/968 Parts** Randy Alexander or Doug Turnbull 608.240.0660.

**'86 944T Sport Seats** Gray flannel fabric. \$500 pair. Steve 847.673.5218.

**'99 Boxster Factory Springs** \$200 set. Steve 847.673.5218.

**'78 911SC Original dashboard**, all leather, no cracks, \$150. Tim Milani, 773-477-1154.

**Miscellaneous** Back issues of Panorama (10 years plus) and Excellence. Mint condition. Call for list and price. Security rings to protect your painted alloy caps (Fuchs). Never used - in original package. Set of four. \$35. Cleaning out basement.

Rich Rybar 630.850.9553 or e-mail: [rybar@marimba.com](mailto:rybar@marimba.com).

**Miscellaneous Panorama 1985 - 1996** (2 issues missing). \$250/OBO plus shipping. Automatic door opener kit for '95 911 from Automation - never even opened. \$50/OBO. Thomas Ficho, 1717 Highland Terrace, Glenview, IL 60025. 847.657.7911 or e-mail: [drficho@msn.com](mailto:drficho@msn.com).

**Vehicle Storage in Westmont** For Rent Building is heated or A/C. conveniently located near 63rd/Fairview. Don't wait until last minute, reserve now. Dominic 630.571.2164.

**Private Chicago Region Porsche Only Storage Facility For Rent** In western suburb. Heated, in/out privileges, secured, private. Steve Wagner. 708.738.5775.

## WANTED

**Mini Bike** With or without engine for 10 yr. Old boy. Looking for used, not abuse condition. Rich Rybar 630.850.9553, e-mail: [rybar@marimba.com](mailto:rybar@marimba.com).

## EMMONS

# COACHWORKS

L I M I T E D

Fine Motoring Accessories®



We provide the finest quality apparel plus a full line of car care supplies and motoring accessories.

## 1-630-832-1411

100 E. ROOSEVELT ROAD • VILLA PARK, IL 60181 • 10 to 6 Mon.-Fri. / 10 to 4 Sat.

<http://www.emmonscoachworks.com>

Chiropractic-Naprapathy-Massage Therapy-Acupuncture-Customized Vitamins

### Moran-Schaefer Clinic

11111 W. Dundee Road  
Wheeling, IL 60090  
(847) 541-6648

Richard A. Schaefer  
Chiropractor  
Naprapath  
Nutrition Counselor

Amy McManaway  
AMTA Certified Massage Therapist  
Peter Lundberg  
Certified Acupuncturist

Tues. & Thurs. 9:00 to 5:00 Wed. & Fri. 9:00 to 4:00 Sat. 8:00 to 12:00

## UNIQUE

Alaska Cruise Pacific Travel Ltd.  
and  
Pacific North West  
travel specialist

James Wright  
Travel Consultant

Tel: (250) 386-0394  
Direct Line: 1-888-421-4451  
B.C. Reg. No.: 2591-1

PCA Member Vancouver Island Region



*(Continued from page 7)*

August brings those hot summer days along with our clubs longest continuing tradition, Potter's Picnic. For over 30 years, Wayne Potter and family have lent the finely mowed lawns of their farm to display our cars and enjoy the company, games, and laid-back relaxed summer atmosphere of a picnic on a farm.

Labor Day weekend brings the street Porsches to the quiet streets of Elkhart Lakes, Wisconsin. Quiet until the still is shattered by what is perhaps the most impressive sight this or any car club has to offer. Saturday afternoon this sleepy little town is shaken awake by the sights and sounds of Porsche racing power. The race cars are escorted in from the world famous Road America circuit to one of the worlds best displays of power, food, drink, and friendship - all outside the world famous Siebkens Resort on beautiful Elkhart Lake.

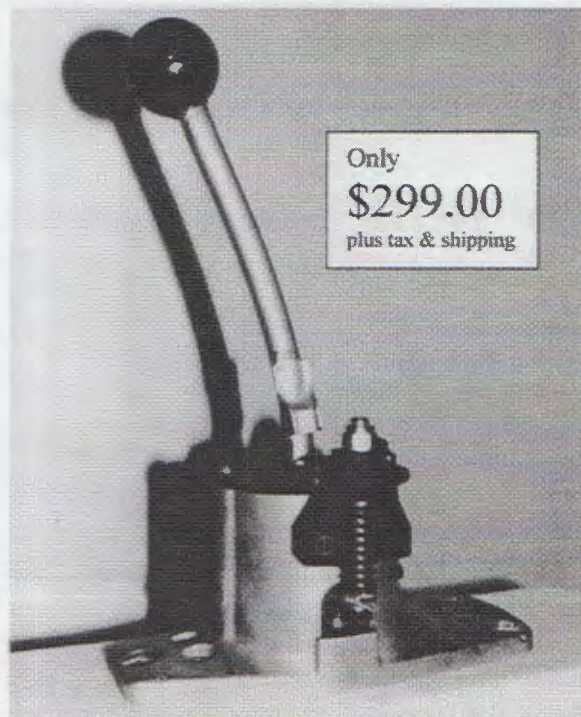
While Labor Day is the traditional end of summer, this year we will extend the season by being guests of the Chicago Botanical Gardens. If you have never been there, this new venue will open your eyes to a real Chicagoland treasure.

So, that's it... the first summer of a new millenium. All you need to do is get a bucket of water and wash off the pride and joy to join us for at least one of these events and celebrate the summer of 2000.

-Jim Jacisin

**Racers:**

## **DON'T MISS A SHIFT AGAIN!**



**with SureShift 915**

**Rapid and positive shifting for 915 transmissions**

by **ROBOTEK**  
**TRACK PROVEN**

Don't damage your engine or 915 transmission during the intensity of a race. Spring loaded SureShift allows you to make precise fast shifts to the gear of your choice with confidence.

*(Shift lever and housing not included)*

**1-815-943-1461**

**3 North Lincoln Street Harvard, IL 60033**



# Editorial License

Well, we're at it again. We must be glutton's for punishment. We were the editors of the Scene a few years back. You think we would have learned our lesson.

Since we put this issue together rather quickly, and from scratch, please let us know if we inadvertently left something out—or your opinion on the look and layout. We appreciate your input.

If you have anything to submit for the Scene, the preferred method is definitely via an e-mail to us at [chicagoscene@pca-chicago.org](mailto:chicagoscene@pca-chicago.org). We will have a separate line installed in mid-January for fax. That number will be 708-588-1785. Please feel free to call us at 708-482-0502 as well (before 9P please).

-David and Heather

## A Special Thank You

Susan Brenkus received a thank you note that we wanted to share with the club from Mike Zurick for flowers the club sent.

"Dear Susan and PCA Friends-

Thanking you all so kindly for the beautiful flower arrangement that was sent to me during my recent hospital stay.

I'm only getting better and better.

Advertiser Index	
Adams Enterprises, Inc.	4
AM Financial Solutions	27
Bacino's Restaurants	Back Cover
Barrington Coach Haus	20
Body Werks of Barrington	12
James Cady Agency	4
Chase & Heckman, Inc.	19
Circle Affiliated Systems, Inc.	7
Eldrup Autobody	16
Emmons Coachworks	22
The Exchange	9
Fast Tech Motorsports	17
R. Fischer Motors, Inc.	12
Integrated Media Systems	16
Paine Webber	27
Kelly-Moss Motorsports	26
Lynch Porsche	6
Mac Neil Automotive Products/WeatherTech	13
Midwest Eurosport/Eurosport Racing	5
Moran-Schaefer Clinic	22
Ed Napleton Porsche	Inside Back Cover
Nives Rizza Porsche	14-15
Northstar Motorsports	Inside Front Cover
Pegasus Auto Racing Supplies, Inc.	16
Perfect Power	21
PressTech	25
Responsive Financial Services, Inc.	18
Robotek	23
Spahr Graphics	18
Uniglobe Pacific Travel Ltd.	22
Weissach Werks	4

Can't keep a "Fast Guy" down.  
Wishing you all a safe and  
healthy "2000."

Sincerely,  
Mike Zurick



**2000**  
NEW DIGITAL & OFFSET PRINT SOLUTIONS  
FOR THE NEW MILLENNIUM

**PresSTECH**  
DIGITAL & OFFSET PRINT SOLUTIONS

**2000**  
NEW DIGITAL & OFFSET PRINT SOLUTIONS  
FOR THE NEW MILLENNIUM

**1 9 9 9**

## **PREMIER PRINT AWARD WINNER**

**"The Premier Print Award** goes to those firms who demonstrate a unique ability to create visual masterpieces. Chosen from thousands of entries, each represents the unique partnership between designer, need and creativity, technology and craft."

### **Digital Pre-Press and Design**

**Networked Digital Color**

**B/W Digital Production**

**Commercial Printing**

**Professional Finishing**

**Laminating**

**Fulfillment and Mailing Services**

Whether you need a full color technical manual, one color brochure or every day stationery, PRESSTECH is your complete one-stop, full service PRINT SOLUTION.

High-Speed Black and White and Full Color Reproduction, Customized Mylar Tabs, Spiral or Double Wire "O" Binding, Perfect Bound, Laminating up to 24" wide. With these solutions our dedicated team members will deliver the personal service needed to ensure all of your project requirements are met and completed within your deadline.

**Proud Printer of:** Porsche Club of America Chicago Region Scene & Beanie Baby Phenomenon

**959 Lee Street Des Plaines, IL 60016 • Tel: 847.824.4485**

**Fax: 847.824.4775 • e-mail [presstech@mc.net](mailto:presstech@mc.net)**



# GET THE WINNING EDGE

**Kelly-Moss Motorsports knows what it takes to win.**

Veteran racers David & Jeff Stone have a phenomenal track record for winning. After all, they've spent the last eleven years building Kelly-Moss into what it is today. And now you can put their experience to work for you.

**Kelly-Moss Motorsports offers full track side service.**

They can help you with everything from minor modifications to complete race car builds. Call them today – or stop by to say hello at Road America and meet representatives from Porsche, plus pro drivers David Murry and Elliott Forbes Robinson

**A Track Record That Speaks For Itself!**

- 18 Professional Race Wins
- 1994 Porsche Cup Winner
- Three IMSA/S.C.C.A. PRO SERIES National Championship Titles
- Over 100,000 miles of racing!



*When Porsche AG Races in America, they choose Kelly-Moss for support. We can help with your racing needs, too! Call today.*

## KELLY-MOSS MOTORSPORTS



### PORSCHE RACING SPECIALISTS

3017 PERRY ST. MADISON WI. 53713 PH.608/2745054 FAX 608/2746252



# Election Results

## President

Bill Murrin-259  
Steve Rashbaum-208

## Vice President

Chuck Bittman-238  
John Ruther-229

## Treasurer

Ed Barnicle-398  
Ed Leed-2 (write in)

## Secretary

Keith Clark-404  
Lee Lichtenstein-2 (write in)

## Director

Dan Gallagher-357  
Nick Brenkus-72 (write in)  
John Ruther-2 (write in)  
Bill Murrin-2 (write in)  
Susan Shire-1 (write in)

## Director

Chris Inglot-430  
Chuck Bittman-2 (write in)  
Howard Yefsky-1 (write in)  
Pete Hackenson-1 (write in)

## Director

Greg Turek-420  
Gene Urban-1 (write in)  
Todd Conforti-2 (write in)  
Steve Rashbaum-1 (write in)  
John Ruther-1 (write in)  
Jim Jacisin-3 (write in)  
Rip Patterson-2 (write in)  
Nick Brenkus-2 (write in)  
Pat Yanahan-2 (write in)

As counted by Secretary Keith Clark,  
Bonnie Yanahan, and Cindy Jacisin,  
11/7/99.

## We know of one investment that always does well.

We believe one of the most profitable investments is an investment in relationships. At times like these, when the market can be volatile, that investment really pays off.

- Now is the time you need someone who understands your goals and risk tolerance.
- Someone who can help you adjust your portfolio in a changing investment environment.
- Someone who takes the time to ask the right questions, so together you can come up with the right answers.

If you want to talk to a Financial Advisor that truly understands the importance of a long-term relationship, call us at PaineWebber.

For information call Paul R. Joyaux, Financial Advisor,  
at (800) 621-0684 or (312) 984-2392.

## Thank you PaineWebber®

125 South Wacker, #2700, Chicago, IL 60606

© 1999 PaineWebber Incorporated. Member SIPC

## AM financial solutions

**MORTGAGE BANKING AND BROKERAGE**

PROUD SPONSOR OF THE CHICAGO REGION CLUB RACE AT ROAD AMERICA  
Watch for the AM Financial Solutions Porsche

- PURCHASE
- REFINANCE
- LINES OF CREDIT
- CONSTRUCTION LOANS
- HOME EQUITY LOANS TO 125%
- DEBT CONSOLIDATION
- CASH FOR ANY PURPOSE (NEW PORSCHE?)
- ALL CREDIT RATINGS ACCEPTED

FOR A FREE CONSULTATION OR PHONE PRE-QUALIFICATION

**(847) 882-1010**

*creative solutions for all your financial needs!*  
An Illinois Residential Mortgage Licensee



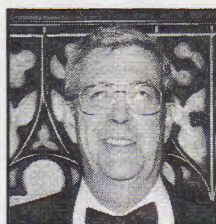
# 2000 Board of Directors



**Bill Murrin**

## President

708-352-5719  
812 North Stone Avenue  
La Grange Park, IL 60526  
Fax: 708-485-0043  
e-mail: Bill968@aol.com.



**Dan Gallagher**

## Director

708-784-0784  
11156 Indian Woods Drive  
Indian Head Park, IL 60525  
Fax: 708-784-0785  
e-mail: Bbabies@aol.com



**Chuck Bittman**

## Vice President

708-352-9505  
450 South Park Road  
La Grange, IL 60525-6111  
Fax: 708-354-9505  
e-mail: cbittman@busynet.net



**Chris Inglot**

## Director

847-559-1126  
591 Greenwood Road  
Northbrook, IL 60062-2624  
Fax: 773-286-4811  
e-mail: Cinglot@aol.com



**Keith Clark**

## Secretary

630-690-3381  
733 Medford  
Carol Stream, IL 60188  
Fax: 630-690-3394  
e-mail:



**Steve Rashbaum**

## Director

847-673-5218  
3500 Church Street, #405  
Evanston, IL 60203  
Fax: 847-673-9355  
e-mail: Srashbaum@lifetech.com



**Ed Barnicle**

## Treasurer

708-579-0313  
5718 South Madison Avenue  
Countryside, IL 60525  
Fax: 773-767-0186  
e-mail: Edbarnicle@aol.com



**Greg Turek**

## Director

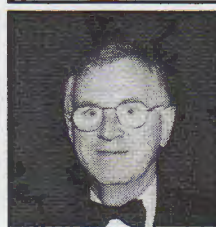
630-904-0800  
4231 Colton Circle  
Naperville, IL 60564  
Fax:  
e-mail:



**Susan Brenkus**

## Immediate Past President

630-529-0911  
408 Cardinal  
Bloomington, IL 60108  
Fax: 630-529-0931  
e-mail: Nbrenkus@aol.com



**Pat Yanahan**

## Director

630-887-7605  
7754 S. County Line Road  
Burr Ridge, IL 60521  
Fax: 630-920-1935  
e-mail: pyanahan@usachicago.com

# 2000 Coordinators

## ARCHIVE HISTORIAN

John O'Keefe 708-344-0911

## AUTOCROSS/GYMKHANA

Jeff Girard 630-985-6739  
Keith Clark 630-690-3381

## CHARITY

## CHICAGO SCENE

David & Heather O'Bryan 708-482-0502

## CONCOURS

Pat Yanahan 630-887-7605  
Jim Jacisin 630-279-4835

## DATABASE

Deborah Leed 847-382-6911

## DRIVER'S EDUCATION

Dan Gallagher 708-784-0784

Jeff Girard

Chris Inglot

## DRIVING INSTRUCTION

Chief Driving Instructor:

John Ruther

Novices:

Ed Leed

## GOODIE STORE

Karen Hackenson

## INSURANCE

Bruce Janecek

## MEMBERSHIP

Mary Anne Nowakowski

## PROPERTY

Ed Leed

630-985-6739

847-559-1126

847-639-1094

847-382-6911

630-655-1629

708-361-8421

847-382-6911

## RALLYE

Tom & Phyllis Harwood

## SAFETY

Jeff Girard

## SOCIAL

Nikki Kroll

## TECH

Pete Hackenson

Todd Conforti

## TRAC 2000 RACE

Chris Inglot

## WEBMASTER

Chuck Bittman

www.pca-chicago.org

630-985-6739

630-469-1546

630-655-1629

847-382-9653

847-559-1126

708-352-9505





48

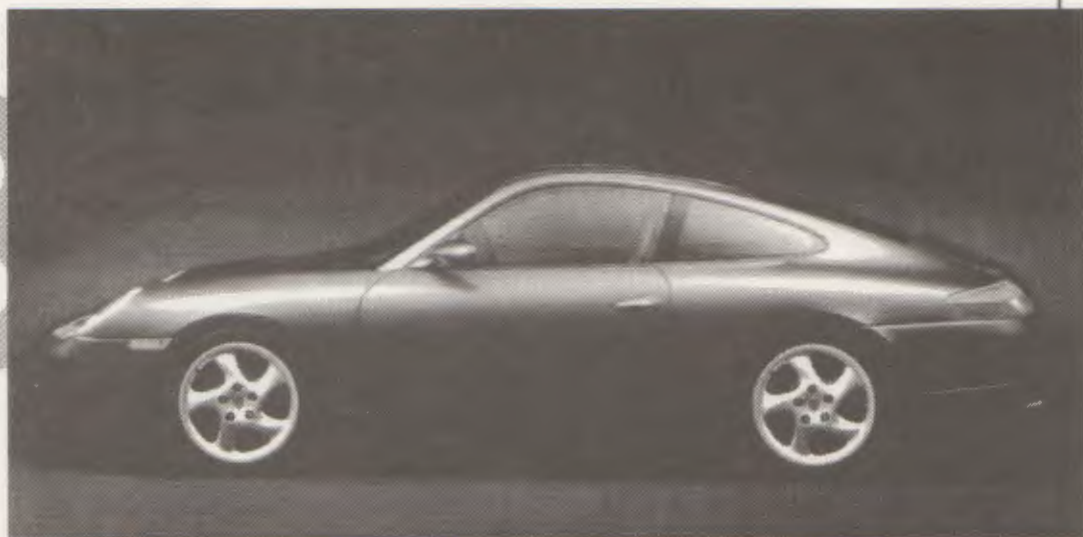


PORSCHE

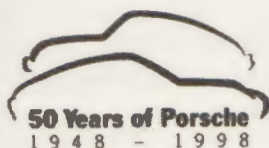
Not just a machine a collection of ideas.

# Evolution 911

98



Everything we know so far. 1998 Porsche 911



**ED NAPLETON**  
**PORSCHE**

745 W. LAKE ST. • ELMHURST • 630-941-4300



**HOT, FRESH AND...FAST!**



**AMERICA'S 1ST HEART-HEALTHY PIZZA!**

FRANCHISE OPPORTUNITIES AVAILABLE 1 708/655-1982

*"Best stuffed spinach in town."*

**Crain's Chicago Business**

*"Mouthwatering, to say the least!"*

*The Boston Globe*

*"One of the nation's top independents"*

**Pizza Today**

*Featured in the New York Times, USA Today, Bon Appetite, ELLE and others.*



2204 NORTH LINCOLN AVE. CHICAGO  
1504 NORTH NAPER BLVD. NAPERVILLE

75 EAST WACKER DR. CHICAGO  
1001 WEST BELMONT AVE. CHICAGO

**CHICAGO SCENE**  
**9507 CENTRAL PARK AVENUE**  
**EVANSTON, IL 60203**

**PERIODICALS POSTAGE**  
**PAID AT AURORA, ILLINOIS**  
**AND AT ADDITIONAL**  
**MAILING OFFICES**